

Kir6.2 antibody

Catalog Number: 112067

Product name

Kir6.2 antibody

Specificity

Human, Mouse, Rat; other species not tested.

Antibody description

Kir6.2 Rabbit Polyclonal antibody. Positive WB detected in human heart tissue, HepG2 cells. Observed molecular weight by Western-blot: 48kd

Preparation

This antibody was obtained by immunization of Kir6.2 recombinant protein (Accession Number: NM_000525). Purification method: Antigen affinity purified.

Formulation

PBS with 0.02% sodium azide and 50% glycerol pH 7.3.

Storage

Store at -20°C. DO NOT ALIQUOT

Clonality

Polyclonal

Ig Type

Rabbit IgG

Applications

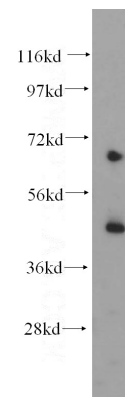
ELISA, WB, IF

Dilutions

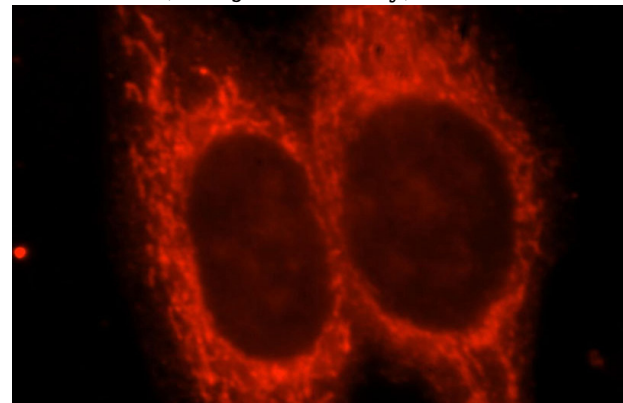
Recommended Dilution:

WB: 1:200-1:2000

Validations



human heart tissue were subjected to SDS PAGE followed by western blot with Catalog No:112067(KCNJ11 antibody) at dilution of 1:200



Immunofluorescent analysis of HepG2 cells, using KCNJ11 antibody Catalog No:112067 at 1:25 dilution and Rhodamine-labeled goat anti-rabbit IgG (red).