

Kininogen 1 antibody



Catalog Number: 112057

Product name

Kininogen 1 antibody

IHC: 1:20-1:200

IF: 1:10-1:100

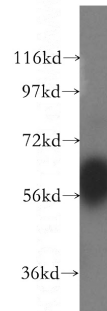
Specificity

Human; other species not tested.

Validations

Antibody description

Kininogen 1 Rabbit Polyclonal antibody. Positive WB detected in HeLa cells, A2780 cells, COLO 320 cells, MCF7 cells. Positive IF detected in HepG2 cells. Positive IHC detected in human endometrial cancer tissue. Observed molecular weight by Western-blot: 60 kDa or 47 kDa



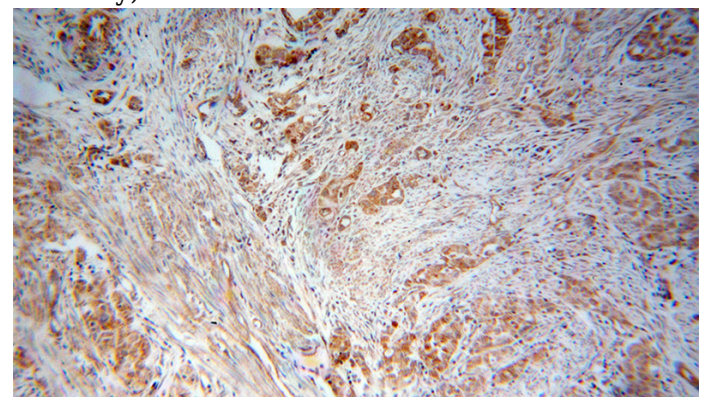
Preparation

This antibody was obtained by immunization of Kininogen 1 recombinant protein (Accession Number: NM_000893). Purification method: Antigen affinity purified.

HeLa cells were subjected to SDS PAGE followed by western blot with Catalog No:112057(KNG1 antibody) at dilution of 1:300

Formulation

PBS with 0.1% sodium azide and 50% glycerol pH 7.3.



Storage

Store at -20°C. DO NOT ALIQUOT

Clonality

Polyclonal

Immunohistochemical of paraffin-embedded human endometrial cancer using Catalog No:112057(KNG1 antibody) at dilution of 1:50 (under 10x lens)

Ig Type

Rabbit IgG

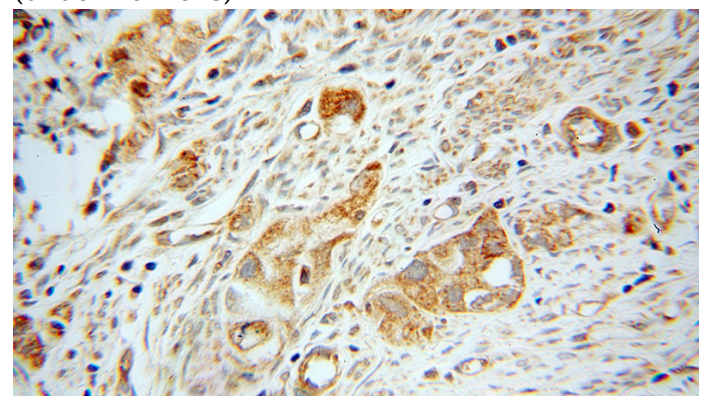
Applications

ELISA, WB, IHC, IF

Dilutions

Recommended Dilution:

WB: 1:200-1:2000



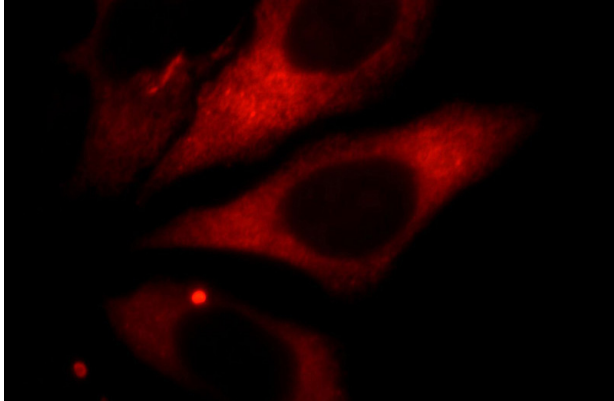
Immunohistochemical of paraffin-embedded

Kininogen 1 antibody



Catalog Number: 112057

human endometrial cancer using Catalog No:112057(KNG1 antibody) at dilution of 1:50 (under 40x lens)



Immunofluorescent analysis of HepG2 cells, using KNG1 antibody Catalog No:112057 at 1:25 dilution and Rhodamine-labeled goat anti-rabbit IgG (red).