

KIN antibody



Catalog Number: 112055

Product name

Polyclonal

KIN antibody

Ig Type

Specificity

Rabbit IgG

human, mouse, rat; other species not tested.

Applications

Antibody description

ELISA, WB

KIN Rabbit Polyclonal antibody. Positive WB detected in mouse testis tissue, HeLa cells, human heart tissue. Observed molecular weight by Western-blot: 45kd

Dilutions

Recommended Dilution:

WB: 1:1000-1:10000

Preparation

This antibody was obtained by immunization of KIN recombinant protein (Accession Number: NM_012311). Purification method: Antigen affinity purified.

Validations

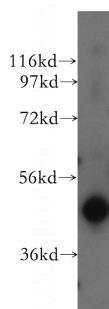
Formulation

PBS with 0.1% sodium azide and 50% glycerol pH 7.3.

Storage

Store at -20°C. DO NOT ALIQUOT

Clonality



mouse testis tissue were subjected to SDS PAGE followed by western blot with Catalog No:112055(KIN antibody) at dilution of 1:500