

# KI67 antibody

Catalog Number: 112041

## Product name

KI67 antibody

## Specificity

Human; other species not tested.

## Antibody description

KI67 Rabbit Polyclonal antibody. Positive IHC detected in human breast cancer tissue, human spleen tissue. Positive IF detected in HepG2 cells.

## Preparation

This antibody was obtained by immunization of Peptide (Accession Number: NM\_002417).  
Purification method: Antigen affinity purified.

## Formulation

PBS with 0.1% sodium azide and 50% glycerol pH 7.3.

## Storage

Store at -20°C. DO NOT ALIQUOT

## Clonality

Polyclonal

## Ig Type

Rabbit IgG

## Applications

ELISA, IF, IHC

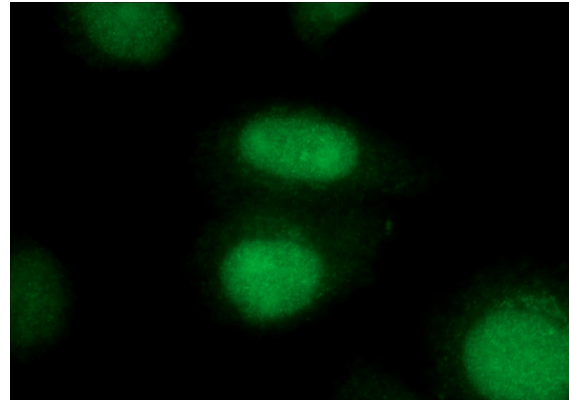
## Dilutions

Recommended Dilution:

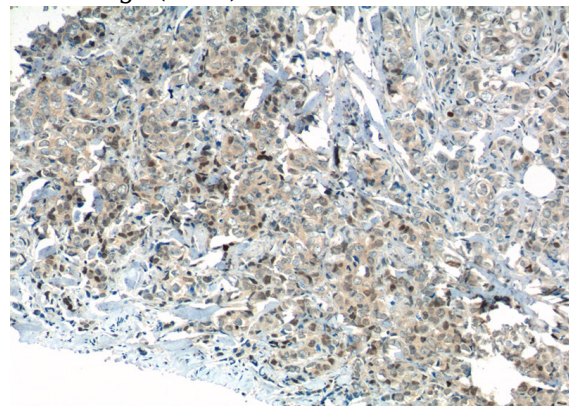
IHC: 1:50-1:500

IF: 1:50-1:500

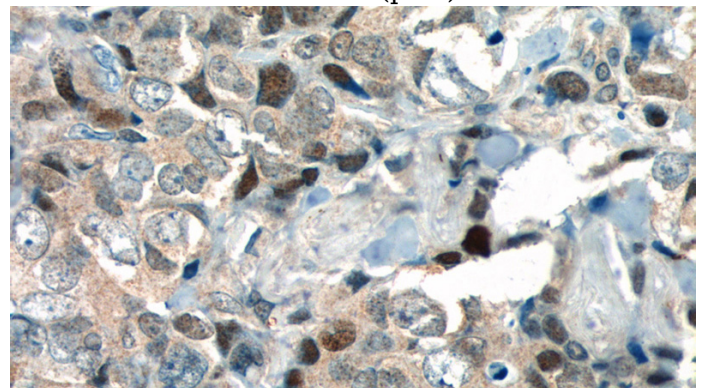
## Validations



Immunofluorescent analysis of (10% Formaldehyde) fixed HepG2 cells using Catalog No:112041(KI67 Antibody) at dilution of 1:100 and Alexa Fluor 488-conjugated AffiniPure Goat Anti-Rabbit IgG(H+L)



Immunohistochemistry of paraffin-embedded human breast cancer tissue slide using Catalog No:112041(KI67 Antibody) at dilution of 1:400 (under 10x lens). heat mediated antigen retrieved with Sodium Citrate buffer (pH6).



Immunohistochemistry of paraffin-embedded human breast cancer tissue slide using Catalog No:112041(KI67 Antibody) at dilution of 1:400 (under 40x lens). heat mediated antigen retrieved

# KI67 antibody



Catalog Number: 112041

---

with Sodium Citrate buffer (pH6).