

KHSRP antibody



Catalog Number: 112040

Product name

KHSRP antibody

IF: 1:20-1:200

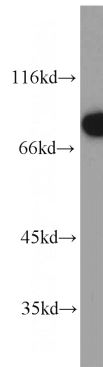
Specificity

Human, Mouse, Rat; other species not tested.

Antibody description

KHSRP Rabbit Polyclonal antibody. Positive IF detected in HeLa cells. Positive IHC detected in human testis tissue. Positive WB detected in HeLa cells, Jurkat cells. Observed molecular weight by Western-blot: 75kd

Validations



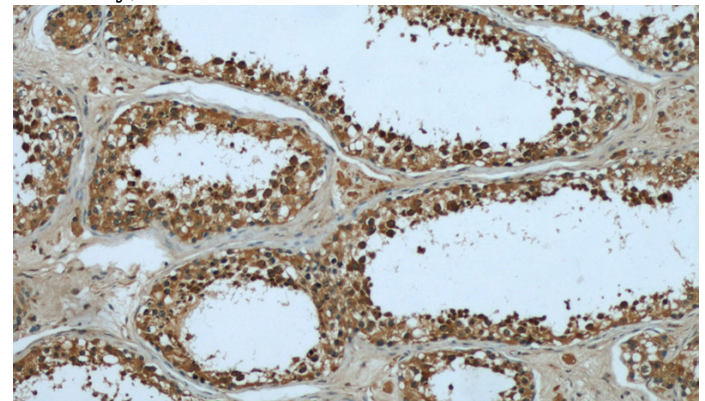
Preparation

This antibody was obtained by immunization of Peptide (Accession Number: NM_003685). Purification method: Antigen affinity purified.

HeLa cells were subjected to SDS PAGE followed by western blot with Catalog No:112040(KHSRP antibody) at dilution of 1:500

Formulation

PBS with 0.02% sodium azide and 50% glycerol pH 7.3.



Storage

Store at -20°C. DO NOT ALIQUOT

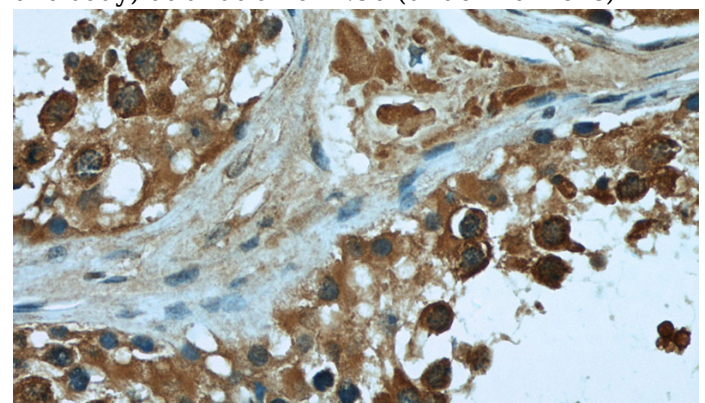
Clonality

Polyclonal

Immunohistochemical of paraffin-embedded human testis using Catalog No:112040(KHSRP antibody) at dilution of 1:50 (under 10x lens)

Ig Type

Rabbit IgG



Applications

ELISA, WB, IHC, IF

Dilutions

Recommended Dilution:

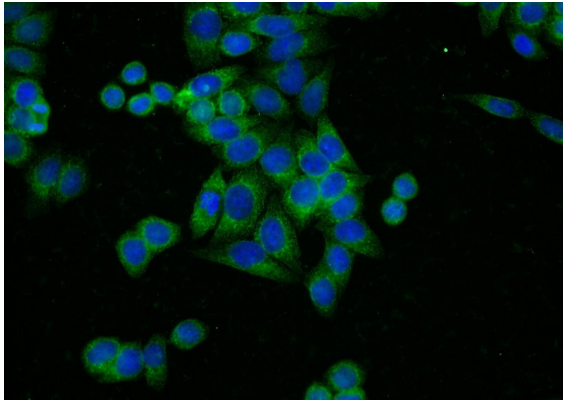
WB: 1:200-1:2000

IHC: 1:20-1:200

Immunohistochemical of paraffin-embedded human testis using Catalog No:112040(KHSRP antibody) at dilution of 1:50 (under 40x lens)

KHSRP antibody

Catalog Number: 112040



Immunofluorescent analysis of HeLa cells using Catalog No:112040(KHSRP Antibody) at dilution of 1:50 and Alexa Fluor 488-conjugated AffiniPure Goat Anti-Rabbit IgG(H+L)