

# KHDC3L antibody



Catalog Number: 112037

## Product name

KHDC3L antibody

## Immunogen

[Human C6orf221 Recombinant protein \(His tag\)](#)

## Specificity

Human; other species not tested.

## Antibody description

KHDC3L Rabbit Polyclonal antibody. Positive IHC detected in human liver cancer tissue. Positive IF detected in HepG2 cells. Positive WB detected in human testis tissue. Observed molecular weight by Western-blot: 21-24 kDa

## Preparation

This antibody was obtained by immunization of KHDC3L recombinant protein (Accession Number: NM\_001017361). Purification method: Antigen affinity purified.

## Formulation

PBS with 0.1% sodium azide and 50% glycerol pH 7.3.

## Storage

Store at -20°C. DO NOT ALIQUOT

## Clonality

Polyclonal

## Ig Type

Rabbit IgG

## Applications

ELISA, WB, IHC, IF

## Dilutions

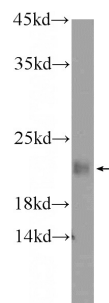
Recommended Dilution:

WB: 1:200-1:2000

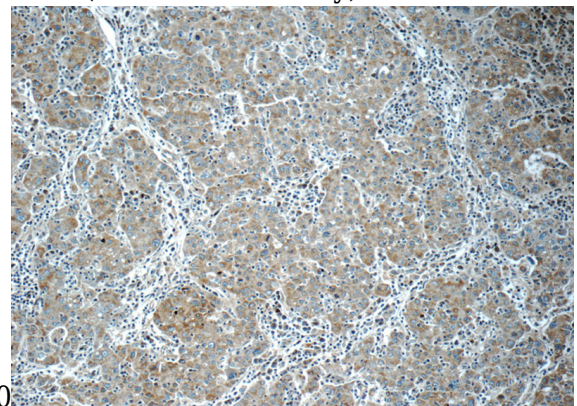
IHC: 1:20-1:200

IF: 1:10-1:100

## Validations



human testis tissue were subjected to SDS PAGE followed by western blot with Catalog No:112037(C6orf221 Antibody) at dilution of

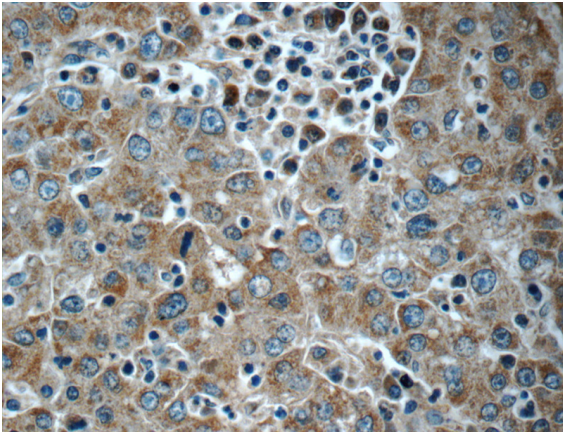


Immunohistochemistry of paraffin-embedded human liver cancer tissue slide using Catalog No:112037(C6orf221 Antibody) at dilution of 1:50 (under 10x lens)

# KHDC3L antibody

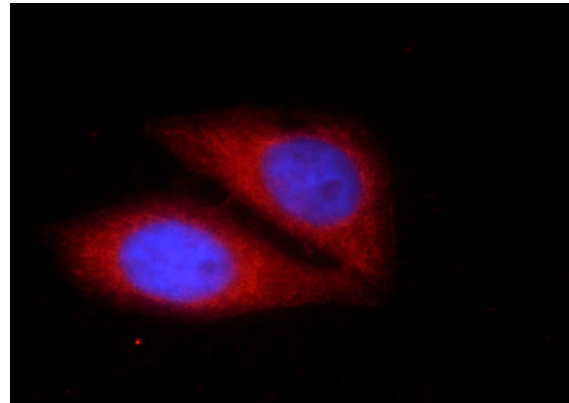
Catalog Number: 112037

---



Immunohistochemistry of paraffin-embedded human liver cancer tissue slide using Catalog No:112037(C6orf221 Antibody) at dilution of 1:50

(under 40x lens)



Immunofluorescent analysis of HepG2 cells using Catalog No:112037(C6orf221 Antibody) at dilution of 1:25 and Rhodamine-Goat anti-Rabbit IgG