

KEAP1 antibody

Catalog Number: 112032

Product name

KEAP1 antibody

Specificity

Human, Mouse, Rat; other species not tested.

Antibody description

KEAP1 Rabbit Polyclonal antibody. Positive IP detected in mouse skeletal muscle tissue. Positive WB detected in HepG2 cells, HEK-293 cells, Jurkat cells, mouse kidney tissue, rat kidney tissue. Positive IHC detected in human lung cancer tissue, human breast cancer tissue, human skeletal muscle tissue. Observed molecular weight by Western-blot: 55-70 kDa

Preparation

This antibody was obtained by immunization of KEAP1 recombinant protein (Accession Number: XM_011528452). Purification method: Antigen affinity purified.

Formulation

PBS with 0.1% sodium azide and 50% glycerol pH 7.3.

Storage

Store at -20°C. DO NOT ALIQUOT

Clonality

Polyclonal

Ig Type

Rabbit IgG

Applications

ELISA, IHC, IP, WB

Dilutions

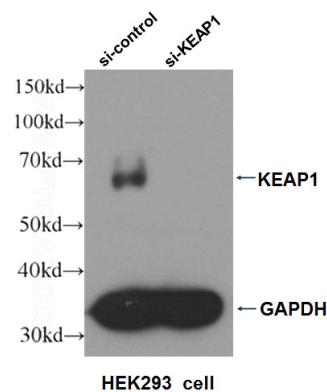
Recommended Dilution:

WB: 1:1000-1:10000

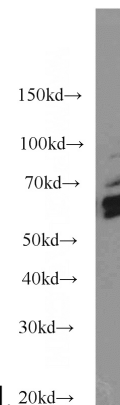
IP: 1:200-1:2000

IHC: 1:20-1:200

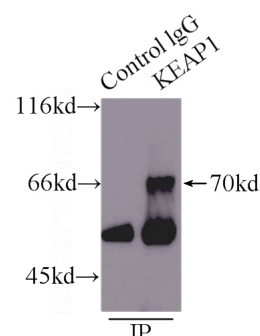
Validations



WB result of KEAP1 antibody (Catalog No:112032, 1:2000) with si-control and si-KEAP1 transfected



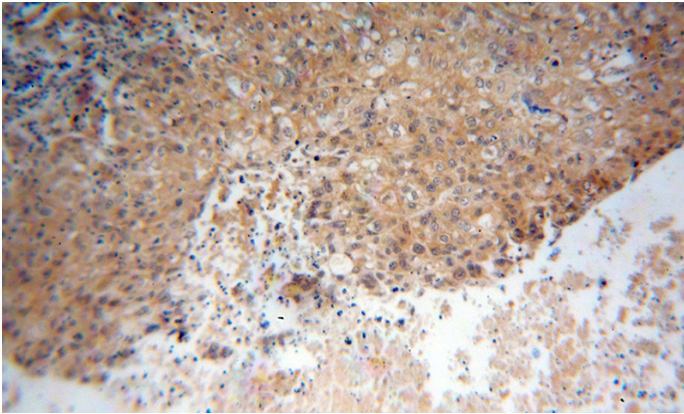
HepG2 cells were subjected to SDS PAGE followed by western blot with Catalog No:112032(KEAP1 antibody) at dilution of 1:2000



KEAP1 antibody

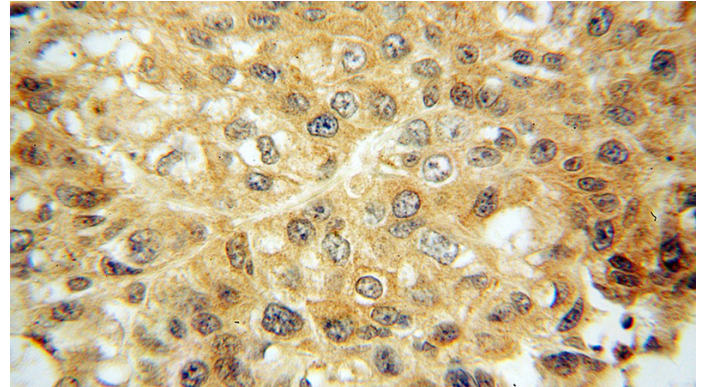
Catalog Number: 112032

IP Result of anti-KEAP1 (IP:Catalog No:112032, 5ug; Detection:Catalog No:112032 1:600) with mouse skeletal muscle tissue lysate 8000ug.



Immunohistochemical of paraffin-embedded human lung cancer using Catalog

No:112032(KEAP1 antibody) at dilution of 1:100 (under 10x lens)



Immunohistochemical of paraffin-embedded human lung cancer using Catalog No:112032(KEAP1 antibody) at dilution of 1:100 (under 40x lens)