

# KDM1 antibody



Catalog Number: 112023

## Product name

KDM1 antibody

IP: 1:200-1:2000

IHC: 1:20-1:200

## Specificity

Human, Mouse; other species not tested.

## Antibody description

KDM1 Rabbit Polyclonal antibody. Positive WB detected in HT-1080 cells, HEK-293 cells, HeLa cells, Jurkat cells, MCF7 cells, NIH/3T3 cells, PC-3 cells. Positive IP detected in HeLa cells. Positive IHC detected in human testis tissue. Observed molecular weight by Western-blot: 110 kDa

## Preparation

This antibody was obtained by immunization of KDM1 recombinant protein (Accession Number: NM\_001009999). Purification method: Antigen affinity purified.

## Formulation

PBS with 0.02% sodium azide and 50% glycerol pH 7.3.

## Storage

Store at -20°C. DO NOT ALIQUOT

## Clonality

Polyclonal

## Ig Type

Rabbit IgG

## Applications

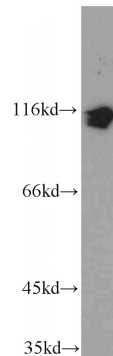
ELISA, WB, IP, IHC

## Dilutions

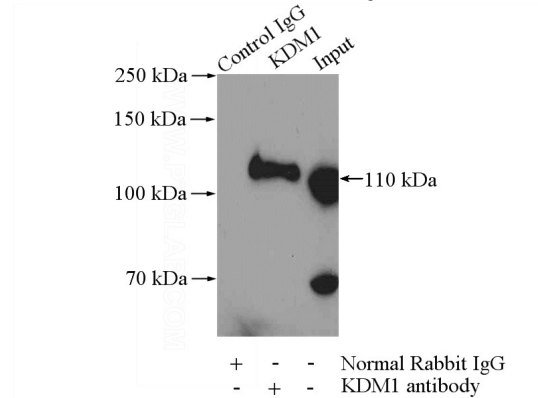
Recommended Dilution:

WB: 1:500-1:5000

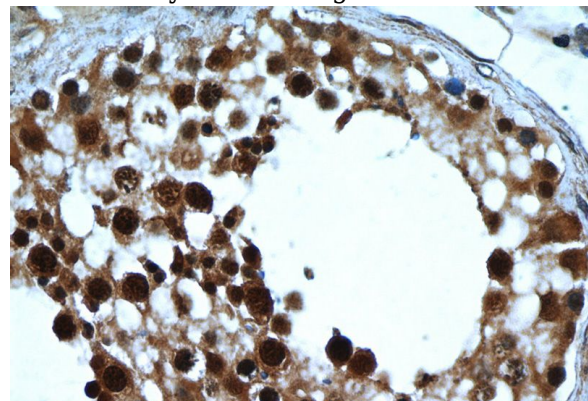
## Validations



HT-1080 cells were subjected to SDS PAGE followed by western blot with Catalog No:112023(KDM1 antibody) at dilution of 1:600



IP Result of anti-KDM1 (IP:Catalog No:112023, 4ug; Detection:Catalog No:112023 1:600) with HeLa cells lysate 2000ug.



Immunohistochemistry of paraffin-embedded human testis tissue slide using Catalog

# KDM1 antibody



Catalog Number: 112023

---

No:112023(KDM1 Antibody) at dilution of 1:50 (under 40x lens)