

Product name

KIF4A antibody

Specificity

human, mouse, rat; other species not tested.

Antibody description

KIF4A Rabbit Polyclonal antibody. Positive IF detected in HepG2. Positive IHC detected in human lung cancer.

Preparation

This antibody was obtained by immunization of KIF4A recombinant protein (Accession Number: BC050548). Purification method: Antigen affinity purified.

Formulation

PBS with 0.02% sodium azide and 50% glycerol pH 7.3.

Storage

Store at -20°C. DO NOT ALIQUOT

Clonality

Polyclonal

Ig Type

Rabbit IgG

Applications

ELISA, IHC, IF

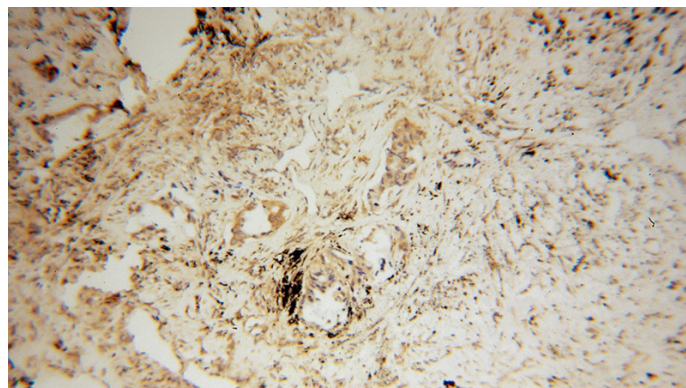
Dilutions

Recommended Dilution:

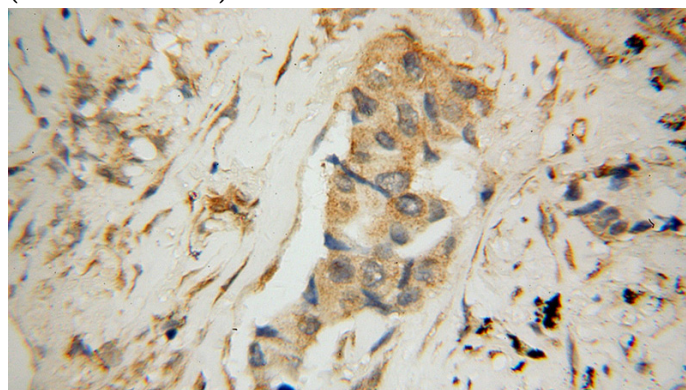
IHC: 1:20-1:200

IF: 1:20-1:200

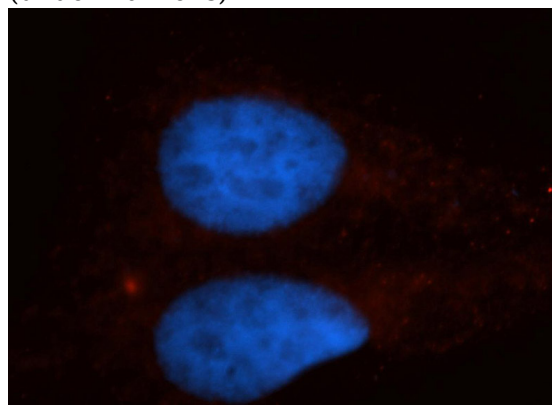
Validations



Immunohistochemical of paraffin-embedded human lung cancer using Catalog No:112015(KIF4A antibody) at dilution of 1:50 (under 10x lens)



Immunohistochemical of paraffin-embedded human lung cancer using Catalog No:112015(KIF4A antibody) at dilution of 1:50 (under 40x lens)



Immunofluorescent analysis of HepG2 cells, using KIF4A antibody Catalog No:112015 at 1:50 dilution and Rhodamine-labeled goat anti-rabbit IgG (red). Blue pseudocolor = DAPI (fluorescent)

KIF4A antibody



Catalog Number: 112015

DNA dye).