

KIF3A antibody

Catalog Number: 112013

Product name

KIF3A antibody

IP: 1:200-1:2000

IHC: 1:20-1:200

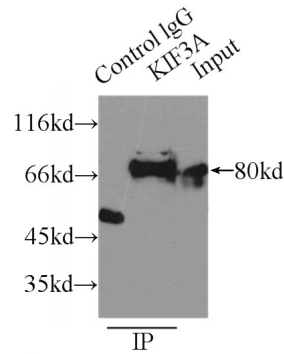
Specificity

Human, Mouse; other species not tested.

Validations

Antibody description

KIF3A Rabbit Polyclonal antibody. Positive IP detected in mouse brain tissue. Positive WB detected in human cerebellum tissue, mouse brain tissue, mouse cerebellum tissue. Positive IHC detected in human gliomas tissue. Observed molecular weight by Western-blot: 80kd



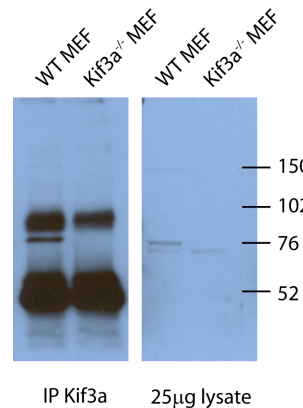
Preparation

This antibody was obtained by immunization of KIF3A recombinant protein (Accession Number: NM_001300792). Purification method: Antigen affinity purified.

IP Result of anti-KIF3A (IP:Catalog No:112013, 4ug; Detection:Catalog No:112013 1:500) with mouse brain tissue lysate 8000ug.

Formulation

PBS with 0.02% sodium azide and 50% glycerol pH 7.3.



Storage

Store at -20°C. DO NOT ALIQUOT

WB and IP result of the antibody anti-KIF3A (Catalog No:112013) in mouse cell from Corbit,

Clonality

Polyclonal

Ig Type

Rabbit IgG

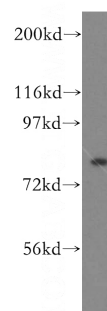
Applications

ELISA, WB, IHC, IP

Dilutions

Recommended Dilution:

WB: 1:200-1:2000



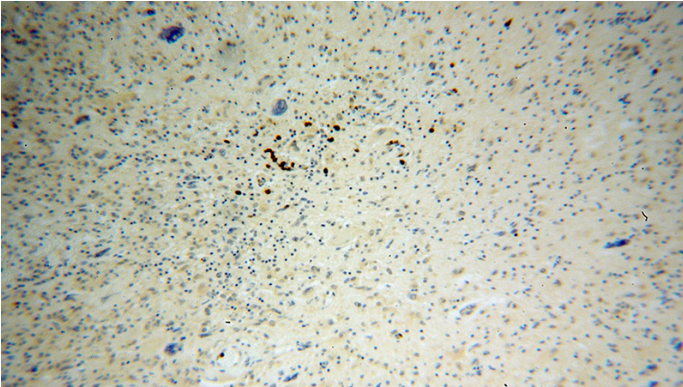
Kevin.

human cerebellum tissue were subjected to SDS PAGE followed by western blot with Catalog

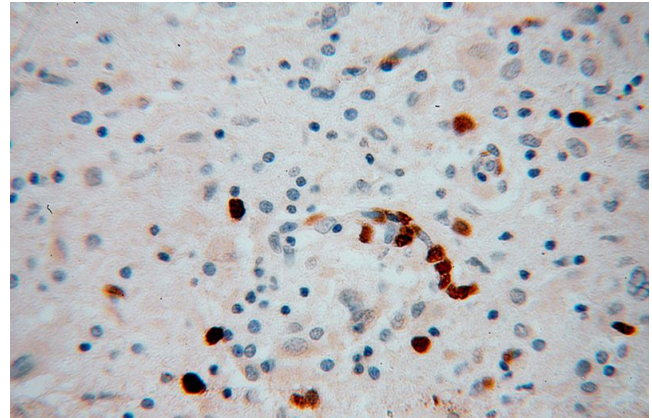
KIF3A antibody

Catalog Number: 112013

No:112013(KIF3A antibody) at dilution of 1:500



Immunohistochemical of paraffin-embedded human gliomas using Catalog No:112013(KIF3A antibody) at dilution of 1:100 (under 10x lens)



Immunohistochemical of paraffin-embedded human gliomas using Catalog No:112013(KIF3A antibody) at dilution of 1:100 (under 40x lens)