

# KIF2B antibody

Catalog Number: 112011

## Product name

KIF2B antibody

## Specificity

Human, Mouse, Rat; other species not tested.

## Antibody description

KIF2B Rabbit Polyclonal antibody. Positive IP detected in mouse testis tissue. Positive WB detected in mouse brain tissue, mouse testis tissue. Observed molecular weight by Western-blot: 80 kDa

## Preparation

This antibody was obtained by immunization of KIF2B recombinant protein (Accession Number: NM\_032559). Purification method: Antigen affinity purified.

## Formulation

PBS with 0.02% sodium azide and 50% glycerol pH 7.3.

## Storage

Store at -20°C. DO NOT ALIQUOT

## Clonality

Polyclonal

## Ig Type

Rabbit IgG

## Applications

ELISA, WB, IP

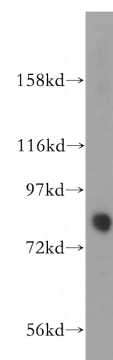
## Dilutions

Recommended Dilution:

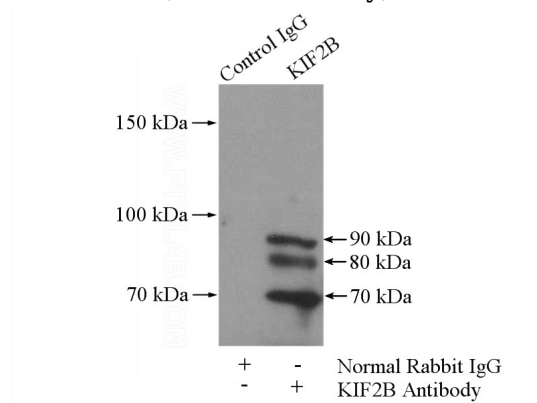
WB: 1:500-1:5000

IP: 1:500-1:5000

## Validations



mouse brain tissue were subjected to SDS PAGE followed by western blot with Catalog No:112011(KIF2B antibody) at dilution of 1:1000



IP Result of anti-KIF2B (IP:Catalog No:112011, 4ug; Detection:Catalog No:112011 1:1000) with mouse testis tissue lysate 4000ug.