

KIF20A antibody

Catalog Number: 112006

Product name

KIF20A antibody

Specificity

Human, Mouse, Rat; other species not tested.

Antibody description

KIF20A Rabbit Polyclonal antibody. Positive IP detected in HEK-293 cells. Positive WB detected in HEK-293 cells, HL-60 cells. Observed molecular weight by Western-blot: 100 kDa

Preparation

This antibody was obtained by immunization of KIF20A recombinant protein (Accession Number: NM_005733). Purification method: Antigen affinity purified.

Formulation

PBS with 0.02% sodium azide and 50% glycerol pH 7.3.

Storage

Store at -20°C. DO NOT ALIQUOT

Clonality

Polyclonal

Ig Type

Rabbit IgG

Applications

ELISA, WB, IP

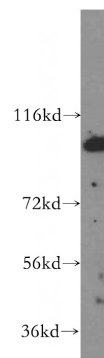
Dilutions

Recommended Dilution:

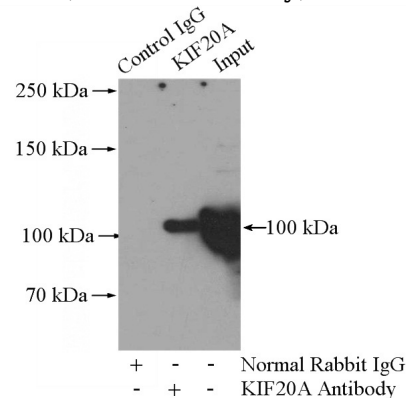
WB: 1:500-1:5000

IP: 1:200-1:2000

Validations



HEK-293 cells were subjected to SDS PAGE followed by western blot with Catalog No:112006(KIF20A antibody) at dilution of 1:500



IP Result of anti-KIF20A (IP:Catalog No:112006, 4ug; Detection:Catalog No:112006 1:500) with HEK-293 cells lysate 1200ug.