

KIF1B antibody

Catalog Number: 112004

Product name

KIF1B antibody

IP: 1:200-1:2000

IHC: 1:20-1:200

Specificity

Human, Mouse, Rat; other species not tested.

Antibody description

KIF1B Rabbit Polyclonal antibody. Positive IHC detected in human skeletal muscle tissue. Positive WB detected in HeLa cells, HEK-293 cells. Positive IP detected in HeLa cells. Observed molecular weight by Western-blot: 199kd, 204kd

Preparation

This antibody was obtained by immunization of KIF1B recombinant protein (Accession Number: BC001415). Purification method: Antigen affinity purified.

Formulation

PBS with 0.02% sodium azide and 50% glycerol pH 7.3.

Storage

Store at -20°C. DO NOT ALIQUOT

Clonality

Polyclonal

Ig Type

Rabbit IgG

Applications

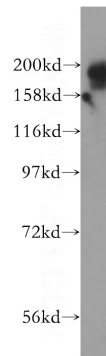
ELISA, WB, IHC, IP

Dilutions

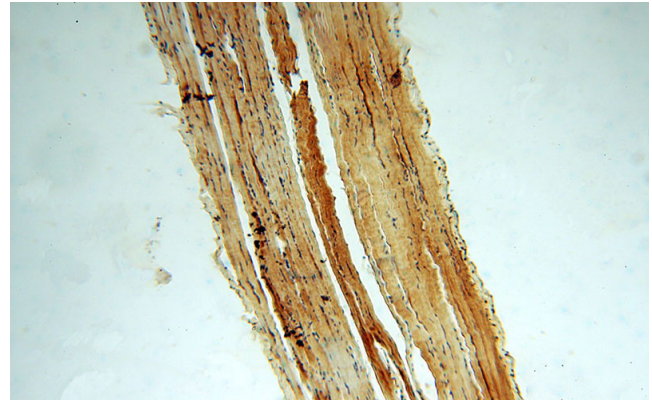
Recommended Dilution:

WB: 1:200-1:2000

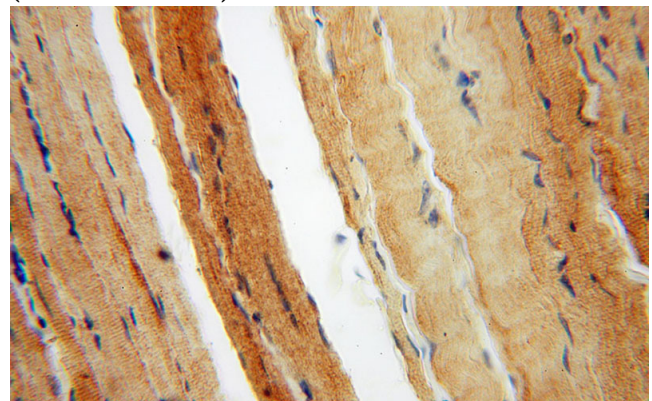
Validations



HeLa cells were subjected to SDS PAGE followed by western blot with Catalog No:112004(KIF1B antibody) at dilution of 1:500



Immunohistochemical of paraffin-embedded human skeletal muscle using Catalog No:112004(KIF1B antibody) at dilution of 1:50 (under 10x lens)



Immunohistochemical of paraffin-embedded

KIF1B antibody

Catalog Number: 112004

human skeletal muscle using Catalog No:112004(KIF1B antibody) at dilution of 1:50 (under 40x lens)

IP Result of anti-KIF1B (IP:Catalog No:112004, 5ug; Detection:Catalog No:112004 1:700) with HeLa cells lysate 2000ug.

