

# KIF17 antibody

Catalog Number: 112001

## Product name

KIF17 antibody

IP: 1:500-1:5000

IHC: 1:20-1:200

## Specificity

Human, Mouse, Rat; other species not tested.

IF: 1:20-1:200

## Antibody description

KIF17 Rabbit Polyclonal antibody. Positive IF detected in COS-7 cells. Positive IHC detected in human gliomas tissue. Positive WB detected in mouse brain tissue. Positive IP detected in mouse brain tissue. Observed molecular weight by Western-blot: 170 kDa

## Preparation

This antibody was obtained by immunization of KIF17 recombinant protein (Accession Number: NM\_001122819). Purification method: Antigen affinity purified.

## Formulation

PBS with 0.02% sodium azide and 50% glycerol pH 7.3.

## Storage

Store at -20°C. DO NOT ALIQUOT

## Clonality

Polyclonal

## Ig Type

Rabbit IgG

## Applications

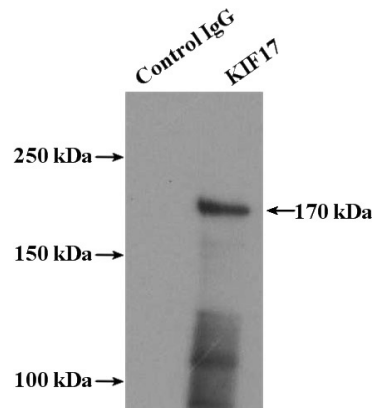
ELISA, IHC, IP, IF, WB

## Dilutions

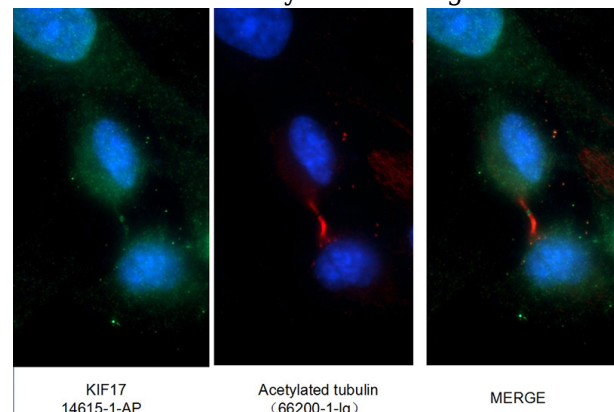
Recommended Dilution:

WB: 1:500-1:5000

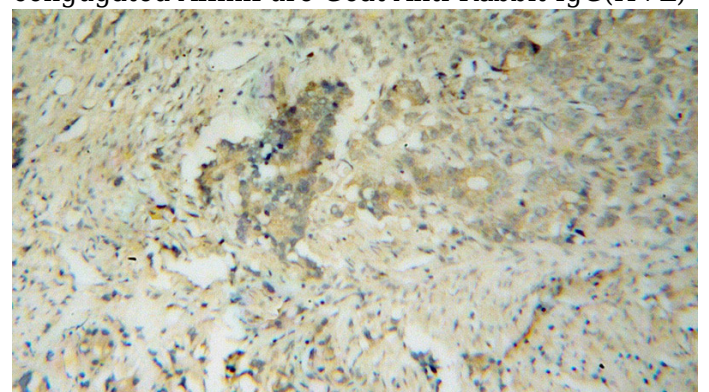
## Validations



IP Result of anti-KIF17 (IP:Catalog No:112001, 4ug; Detection:Catalog No:112001 1:1000) with mouse brain tissue lysate 4000ug.



Immunofluorescent analysis of (-20oc Ethanol) fixed COS-7 cells using Catalog No:112001(KIF17 Antibody) at dilution of 1:50 and Alexa Fluor 488-conjugated AffiniPure Goat Anti-Rabbit IgG(H+L)

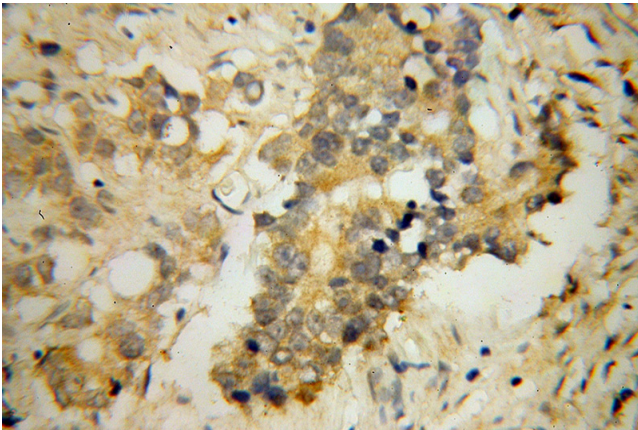


# KIF17 antibody

Catalog Number: 112001

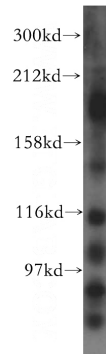
---

Immunohistochemical of paraffin-embedded human gliomas using Catalog No:112001(KIF17 antibody) at dilution of 1:100 (under 10x lens)



Immunohistochemical of paraffin-embedded

human gliomas using Catalog No:112001(KIF17 antibody) at dilution of 1:100 (under 40x lens)



mouse brain tissue were subjected to SDS PAGE followed by western blot with Catalog No:112001(KIF17 antibody) at dilution of 1:1000