

KIF15 antibody

Catalog Number: 112000

Product name

KIF15 antibody

IP: 1:200-1:2000

IHC: 1:20-1:200

Specificity

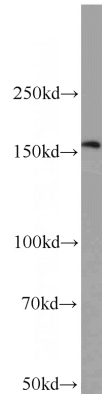
Human, Mouse, Rat; other species not tested.

IF: 1:20-1:200

Antibody description

KIF15 Rabbit Polyclonal antibody. Positive IP detected in mouse thymus tissue. Positive WB detected in mouse thymus tissue. Positive IHC detected in human testis tissue. Positive IF detected in HEK-293 cells. Observed molecular weight by Western-blot: 150-165 kDa

Validations



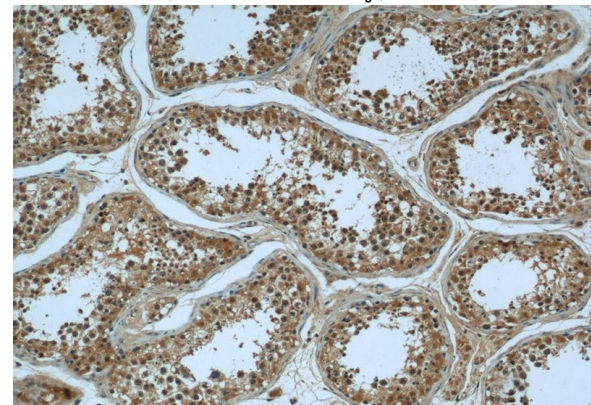
Preparation

This antibody was obtained by immunization of Peptide (Accession Number: NM_020242). Purification method: Antigen affinity purified.

mouse thymus tissue were subjected to SDS PAGE followed by western blot with Catalog No:112000(KIF15 antibody) at dilution of 1:500

Formulation

PBS with 0.02% sodium azide and 50% glycerol pH 7.3.



Storage

Store at -20°C. DO NOT ALIQUOT

Clonality

Polyclonal

Ig Type

Rabbit IgG

Applications

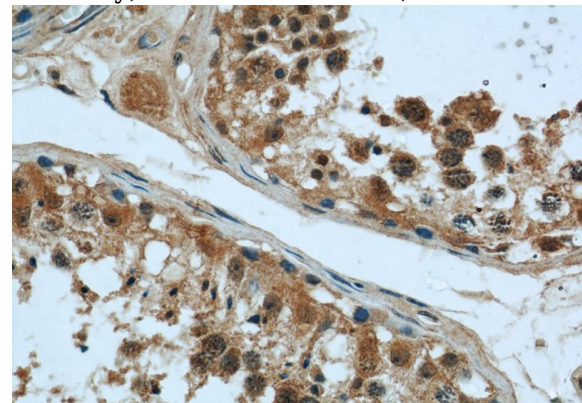
ELISA, WB, IHC, IF, IP

Dilutions

Recommended Dilution:

WB: 1:200-1:2000

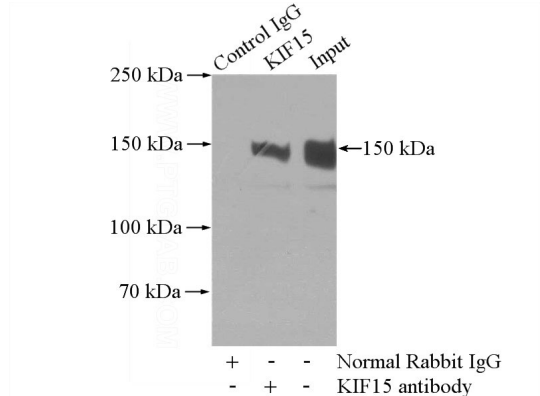
Immunohistochemical of paraffin-embedded human testis using Catalog No:112000(KIF15 antibody) at dilution of 1:50 (under 10x lens)



KIF15 antibody

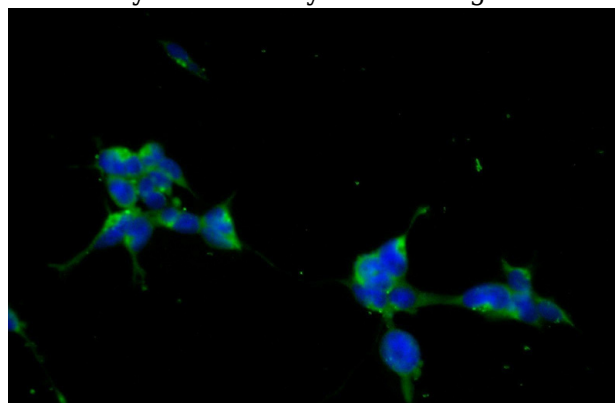
Catalog Number: 112000

Immunohistochemical of paraffin-embedded human testis using Catalog No:112000(KIF15 antibody) at dilution of 1:50 (under 40x lens)



IP Result of anti-KIF15 (IP:Catalog No:112000, 4ug; Detection:Catalog No:112000 1:500) with

mouse thymus tissue lysate 2800ug.



Immunofluorescent analysis of HEK-293 cells using Catalog No:112000(KIF15 Antibody) at dilution of 1:50 and Alexa Fluor 488-conjugated AffiniPure Goat Anti-Rabbit IgG(H+L)