

# KIF12 antibody

Catalog Number: 111999

## Product name

KIF12 antibody

IHC: 1:20-1:200

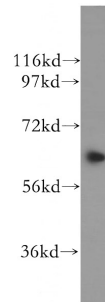
## Specificity

Human, Mouse, Rat; other species not tested.

## Antibody description

KIF12 Rabbit Polyclonal antibody. Positive WB detected in Y79 cells. Positive IHC detected in human kidney tissue, human pancreas cancer tissue, human renal cell carcinoma tissue. Observed molecular weight by Western-blot: 65kd

## Validations



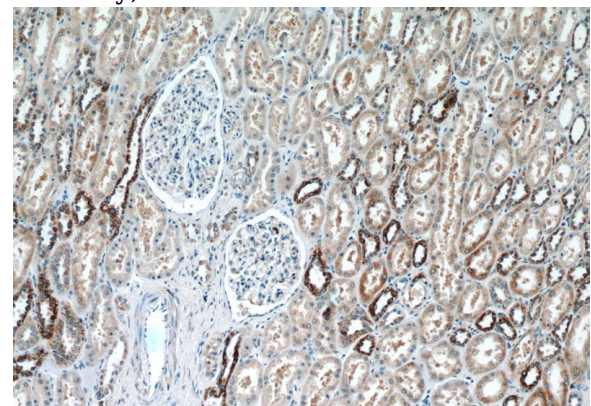
## Preparation

This antibody was obtained by immunization of KIF12 recombinant protein (Accession Number: XM\_047422710). Purification method: Antigen affinity purified.

Y79 cells were subjected to SDS PAGE followed by western blot with Catalog No:111999(KIF12 antibody) at dilution of 1:400

## Formulation

PBS with 0.1% sodium azide and 50% glycerol pH 7.3.



## Storage

Store at -20°C. DO NOT ALIQUOT

## Clonality

Polyclonal

## Ig Type

Rabbit IgG

## Applications

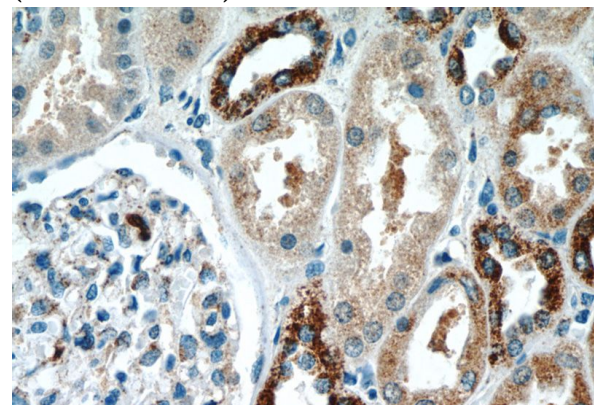
ELISA, WB, IHC

## Dilutions

Recommended Dilution:

WB: 1:500-1:5000

Immunohistochemistry of paraffin-embedded human kidney tissue slide using Catalog No:111999(KIF12 Antibody) at dilution of 1:50 (under 10x lens)



Immunohistochemistry of paraffin-embedded human kidney tissue slide using Catalog

# KIF12 antibody



Catalog Number: 111999

---

No:111999(KIF12 Antibody) at dilution of 1:50 (under 40x lens)