

KCNJ15 antibody



Catalog Number: 111969

Product name

KCNJ15 antibody

IP: 1:200-1:2000

IHC: 1:20-1:200

Specificity

Human, Mouse, Rat; other species not tested.

Antibody description

KCNJ15 Rabbit Polyclonal antibody. Positive WB detected in HeLa cells, HepG2 cells. Positive IP detected in HepG2 cells. Positive IHC detected in human liver tissue. Observed molecular weight by Western-blot: 35 kDa

Preparation

This antibody was obtained by immunization of KCN15 recombinant protein (Accession Number: XM_011529560). Purification method: Antigen affinity purified.

Formulation

PBS with 0.02% sodium azide and 50% glycerol pH 7.3.

Storage

Store at -20°C. DO NOT ALIQUOT

Clonality

Polyclonal

Ig Type

Rabbit IgG

Applications

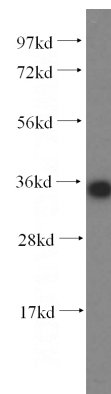
ELISA, WB, IHC, IP

Dilutions

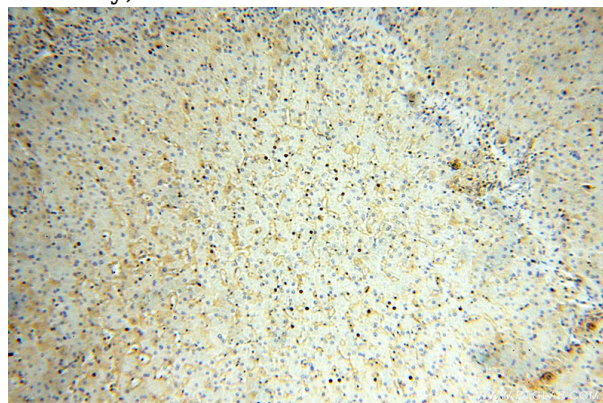
Recommended Dilution:

WB: 1:500-1:5000

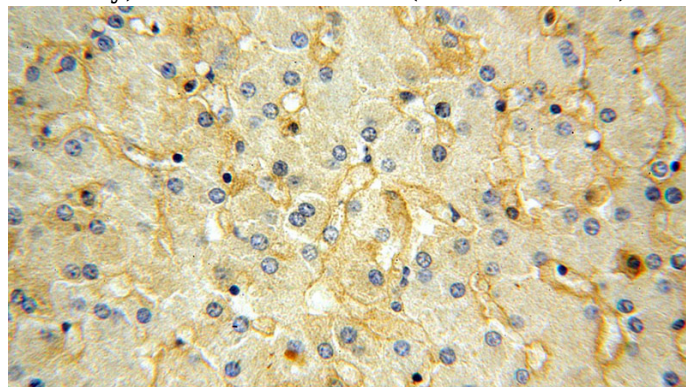
Validations



HeLa cells were subjected to SDS PAGE followed by western blot with Catalog No:111969(KCN15 antibody) at dilution of 1:500



Immunohistochemical of paraffin-embedded human liver using Catalog No:111969(KCN15 antibody) at dilution of 1:100 (under 10x lens)

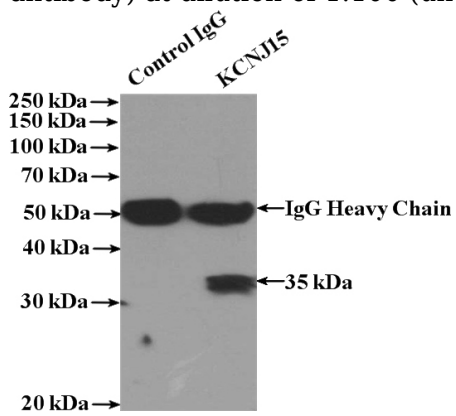


Immunohistochemical of paraffin-embedded human liver using Catalog No:111969(KCN15 antibody)

KCNJ15 antibody

Catalog Number: 111969

antibody) at dilution of 1:100 (under 40x lens)



IP Result of anti-KCNJ15 (IP:Catalog No:111969, 4ug; Detection:Catalog No:111969 1:500) with HepG2 cells lysate 1000ug.