

# ITPKC antibody



Catalog Number: 111959

## Product name

ITPKC antibody

WB: 1:200-1:2000

IP: 1:200-1:1000

## Specificity

Human; other species not tested.

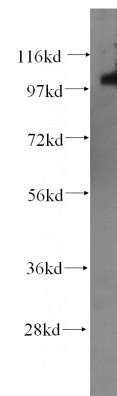
IHC: 1:20-1:200

IF: 1:20-1:200

## Antibody description

ITPKC Rabbit Polyclonal antibody. Positive IF detected in HepG2 cells. Positive IHC detected in human skeletal muscle tissue, human heart tissue, human lymphoma tissue. Positive WB detected in human heart tissue. Positive IP detected in HepG2 cells. Observed molecular weight by Western-blot: 100-105 kDa

## Validations



## Preparation

This antibody was obtained by immunization of ITPKC recombinant protein (Accession Number: XM\_047439466). Purification method: Antigen affinity purified.

human heart tissue were subjected to SDS PAGE followed by western blot with Catalog No:111959(ITPKC antibody) at dilution of 1:400

## Formulation

PBS with 0.02% sodium azide and 50% glycerol pH 7.3.

## Storage

Store at -20°C. DO NOT ALIQUOT

## Clonality

Polyclonal

## Ig Type

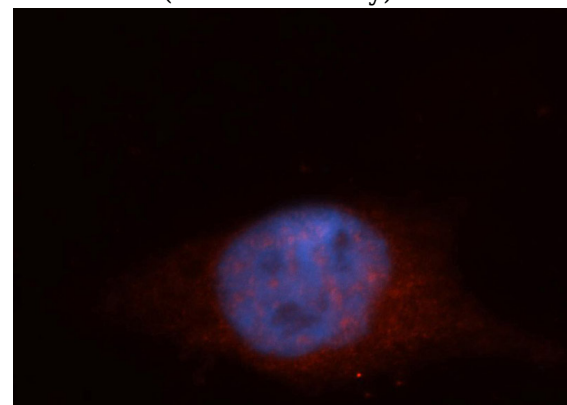
Rabbit IgG

## Applications

ELISA, WB, IF, IHC, IP

## Dilutions

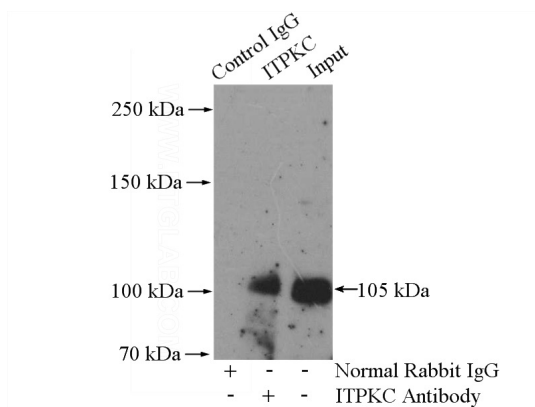
Recommended Dilution:



Immunofluorescent analysis of HepG2 cells, using ITPKC antibody Catalog No:111959 at 1:50 dilution and Rhodamine-labeled goat anti-rabbit IgG (red). Blue pseudocolor = DAPI (fluorescent

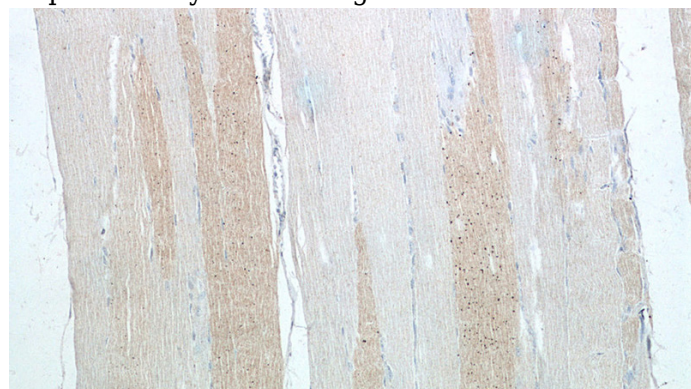
# ITPKC antibody

Catalog Number: 111959

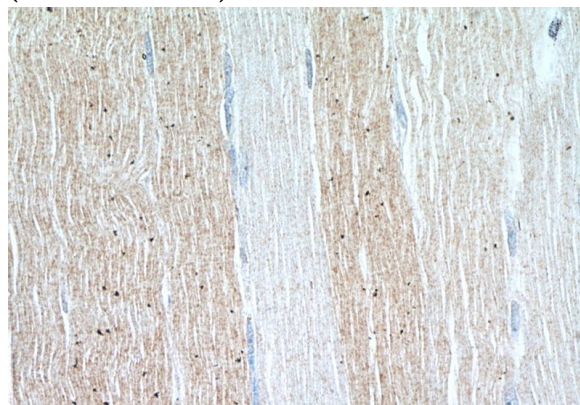


DNA dye).

IP Result of anti-ITPKC (IP:Catalog No:111959, 4ug; Detection:Catalog No:111959 1:400) with HepG2 cells lysate 1600ug.



Immunohistochemistry of paraffin-embedded human skeletal muscle tissue slide using Catalog No:111959(ITPKC Antibody) at dilution of 1:50 (under 10x lens)



Immunohistochemistry of paraffin-embedded human skeletal muscle tissue slide using Catalog No:111959(ITPKC Antibody) at dilution of 1:50 (under 40x lens)