

IST1 antibody



Catalog Number: 111943

Product name

IST1 antibody

IP: 1:200-1:1000

IHC: 1:20-1:200

Specificity

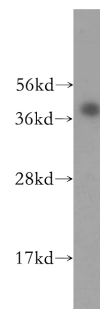
Human; other species not tested.

IF: 1:10-1:100

Validations

Antibody description

IST1 Rabbit Polyclonal antibody. Positive WB detected in human skeletal muscle tissue, A549 cells. Positive IP detected in A549 cells. Positive IHC detected in human lung cancer tissue. Positive IF detected in HepG2 cells. Observed molecular weight by Western-blot: 40 kDa



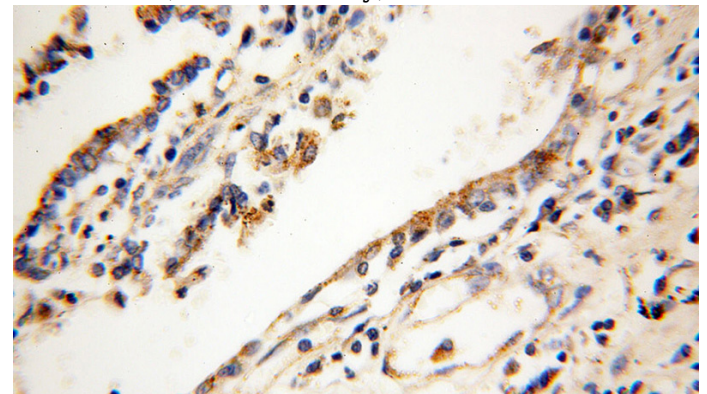
Preparation

This antibody was obtained by immunization of IST1 recombinant protein (Accession Number: NM_014761). Purification method: Antigen affinity purified.

human skeletal muscle tissue were subjected to SDS PAGE followed by western blot with Catalog No:111943(hIST1 antibody) at dilution of 1:300

Formulation

PBS with 0.1% sodium azide and 50% glycerol pH 7.3.



Storage

Store at -20°C. DO NOT ALIQUOT

Clonality

Polyclonal

Ig Type

Rabbit IgG

Applications

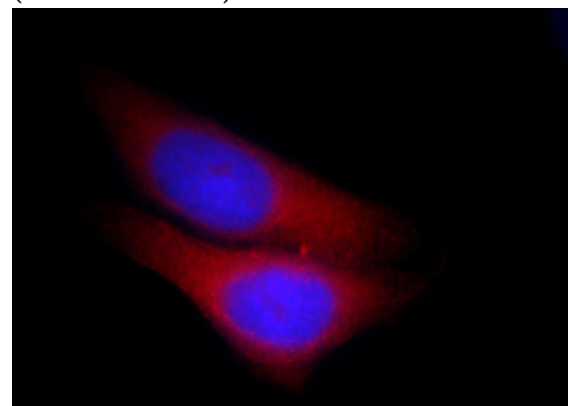
ELISA, WB, IF, IHC, IP

Dilutions

Recommended Dilution:

WB: 1:500-1:5000

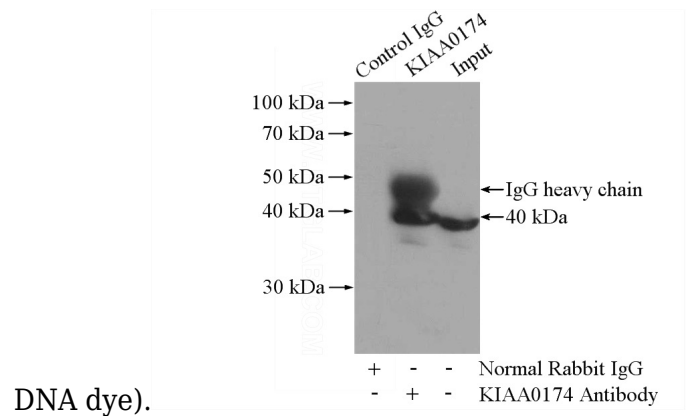
Immunohistochemical of paraffin-embedded human lung cancer using Catalog No:111943(hIST1 antibody) at dilution of 1:200 (under 40x lens)



IST1 antibody

Catalog Number: 111943

Immunofluorescent analysis of HepG2 cells, using KIAA0174 antibody Catalog No:111943 at 1:25 dilution and Rhodamine-labeled goat anti-rabbit IgG (red). Blue pseudocolor = DAPI (fluorescent



IP Result of anti-hIST1 (IP:Catalog No:111943, 4ug; Detection:Catalog No:111943 1:300) with A549 cells lysate 2800ug.