

**Product name**

ISCU antibody

**Immunogen**

[Human ISCU Recombinant protein \(GST tag\)](#)

**Specificity**

Human, Mouse, Rat; other species not tested.

**Antibody description**

ISCU Rabbit Polyclonal antibody. Positive IP detected in mouse heart tissue. Positive WB detected in mouse heart tissue, COLO 320 cells, HeLa cells. Positive IHC detected in human lung cancer tissue, human endometrial cancer tissue. Positive IF detected in MCF-7 cells. Observed molecular weight by Western-blot: 14-15 kDa, 18-19 kDa

**Preparation**

This antibody was obtained by immunization of ISCU recombinant protein (Accession Number: NM\_213595). Purification method: Antigen affinity purified.

**Formulation**

PBS with 0.02% sodium azide and 50% glycerol pH 7.3.

**Storage**

Store at -20°C. DO NOT ALIQUOT

**Clonality**

Polyclonal

**Ig Type**

Rabbit IgG

**Applications**

ELISA, WB, IHC, IF, IP

**Dilutions**

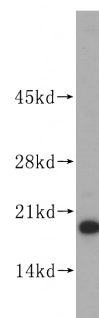
Recommended Dilution:

WB: 1:200-1:2000

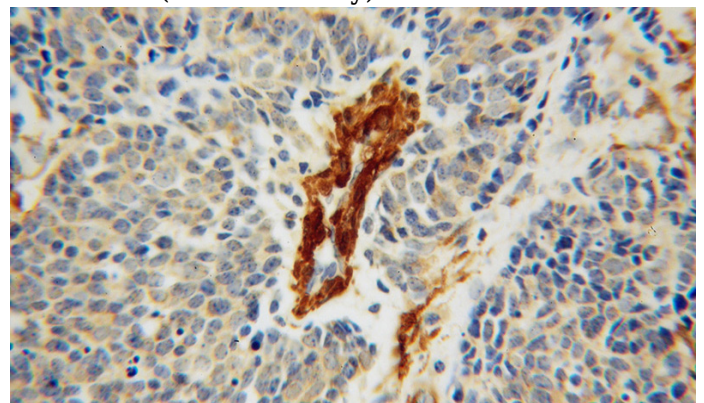
IP: 1:200-1:2000

IHC: 1:20-1:200

IF: 1:20-1:200

**Validations**

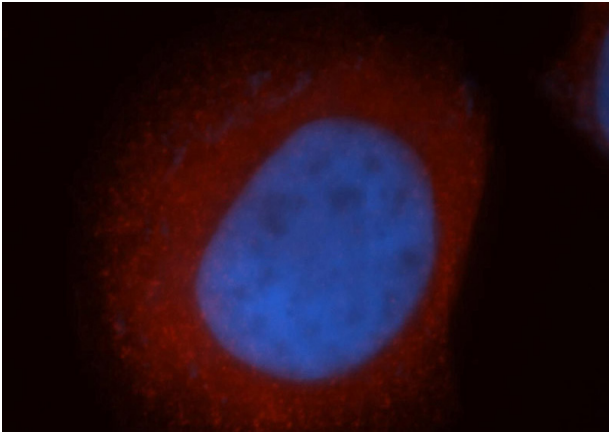
mouse heart tissue were subjected to SDS PAGE followed by western blot with Catalog No:111936 (ISCU antibody) at dilution of 1:500



Immunohistochemical of paraffin-embedded human lung cancer using Catalog No:111936 (ISCU antibody) at dilution of 1:50 (under 40x lens)

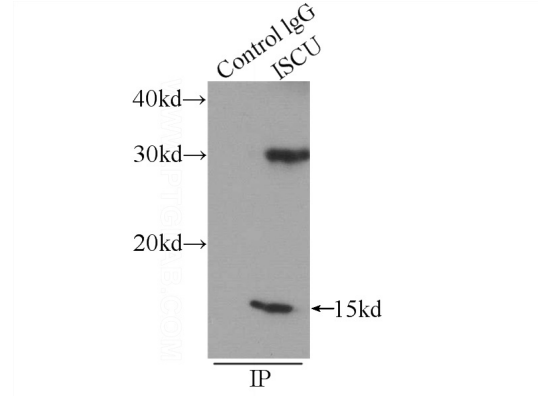
# ISCU antibody

Catalog Number: 111936



Immunofluorescent analysis of MCF-7 cells, using ISCU antibody Catalog No:111936 at 1:50 dilution and Rhodamine-labeled goat anti-rabbit IgG (red).

Blue pseudocolor = DAPI (fluorescent DNA dye).



IP Result of anti-ISCU (IP:Catalog No:111936, 3ug; Detection:Catalog No:111936 1:500) with mouse heart tissue lysate 4000ug.