

# KCNE1 antibody



Catalog Number: 111928

## Product name

KCNE1 antibody

## Specificity

Human, Mouse, Rat; other species not tested.

## Antibody description

KCNE1 Rabbit Polyclonal antibody. Positive WB detected in mouse heart tissue, mouse testis tissue. Positive IF detected in mouse heart tissue. Observed molecular weight by Western-blot: 18-25kd, 28-35kd

## Preparation

This antibody was obtained by immunization of KCNE1 recombinant protein (Accession Number: BC036452). Purification method: Antigen affinity purified.

## Formulation

PBS with 0.02% sodium azide and 50% glycerol pH 7.3.

## Storage

Store at -20°C. DO NOT ALIQUOT

## Clonality

Polyclonal

## Ig Type

Rabbit IgG

## Applications

ELISA, WB, IF

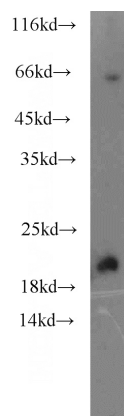
## Dilutions

Recommended Dilution:

WB: 1:500-1:5000

IF: 1:20-1:200

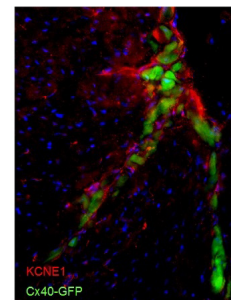
## Validations



mouse heart tissue were subjected to SDS PAGE followed by western blot with Catalog No:111928(KCNE1 antibody) at dilution of 1:3000

KCNE1 Polyclonal Antibody

Immunofluorescence of frozen mouse Heart section. 1:200 dilution overnight at 4°C in Block. Secondary antibody: Alexa 594 Goat anti-rabbit.  
KCNE1 is localised to conduction system (Cx40-GFP), although expression appears to be in cells surrounding conduction myocytes (not the cardiomyocytes, as expected).



IF result of anti-KCNE1(Catalog No:111928) in frozen mouse heart section by Dr Nicola Smart.