

KATNB1 antibody

Catalog Number: 111916

Product name

KATNB1 antibody

IP: 1:200-1:2000

IF: 1:50-1:500

Specificity

Human, Mouse, Rat; other species not tested.

Antibody description

KATNB1 Rabbit Polyclonal antibody. Positive IF detected in HeLa cells. Positive WB detected in HeLa cells, A431 cells, HepG2 cells, mouse skeletal muscle tissue. Positive IP detected in HeLa cells. Observed molecular weight by Western-blot: 72-80 kDa

Preparation

This antibody was obtained by immunization of KATNB1 recombinant protein (Accession Number: NM_005886). Purification method: Antigen affinity purified.

Formulation

PBS with 0.02% sodium azide and 50% glycerol pH 7.3.

Storage

Store at -20°C. DO NOT ALIQUOT

Clonality

Polyclonal

Ig Type

Rabbit IgG

Applications

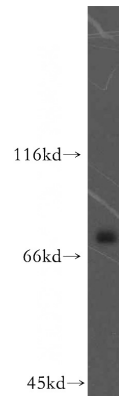
ELISA, WB, IP, IF

Dilutions

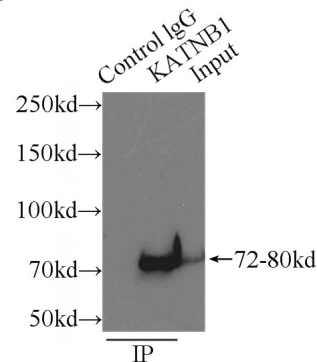
Recommended Dilution:

WB: 1:500-1:5000

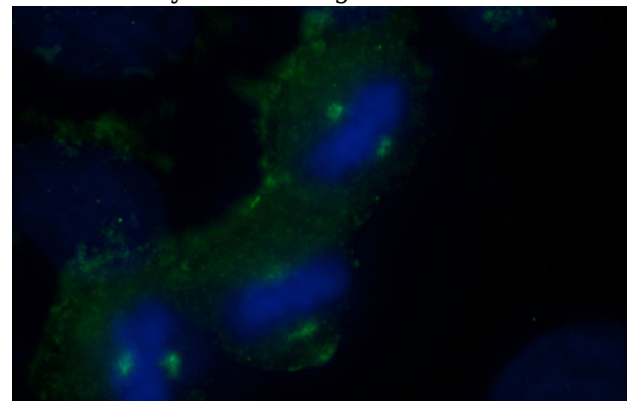
Validations



HeLa cells were subjected to SDS PAGE followed by western blot with Catalog No:111916(KATNB1 antibody) at dilution of 1:300



IP Result of anti-KATNB1 (IP:Catalog No:111916, 3ug; Detection:Catalog No:111916 1:500) with HeLa cells lysate 3000ug.



Immunofluorescent analysis of (-20oc Ethanol) fixed HeLa cells using Catalog

KATNB1 antibody



Catalog Number: 111916

No:111916(KATNB1 Antibody) at dilution of 1:50

and Alexa Fluor 488-conjugated AffiniPure Goat
Anti-Rabbit IgG(H+L)