

KANK1 antibody



Catalog Number: 111908

Product name

KANK1 antibody

IHC: 1:20-1:200

IF: 1:10-1:100

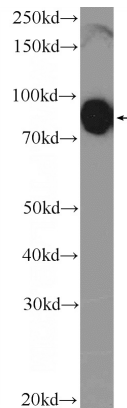
Specificity

Human, Mouse, Rat; other species not tested.

Validations

Antibody description

KANK1 Rabbit Polyclonal antibody. Positive IHC detected in human heart tissue. Positive IF detected in HepG2 cells. Positive WB detected in Jurkat cells, HEK-293 cells, mouse kidney tissue. Observed molecular weight by Western-blot: 75-85kd, 30kd



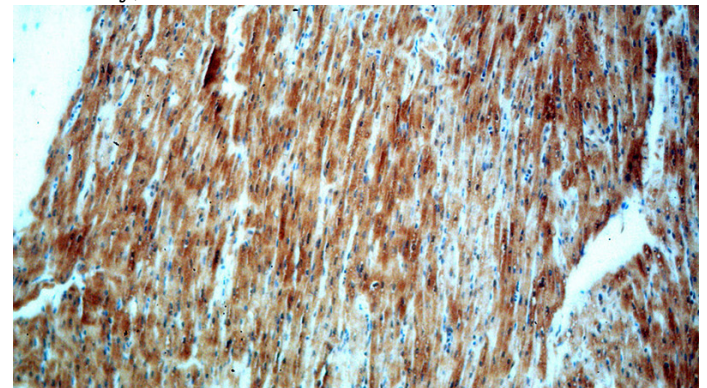
Preparation

This antibody was obtained by immunization of Peptide (Accession Number: NM_015158). Purification method: Antigen affinity purified.

Jurkat cells were subjected to SDS PAGE followed by western blot with Catalog No:111908(KANK1 Antibody) at dilution of 1:1000

Formulation

PBS with 0.02% sodium azide and 50% glycerol pH 7.3.



Storage

Store at -20°C. DO NOT ALIQUOT

Clonality

Polyclonal

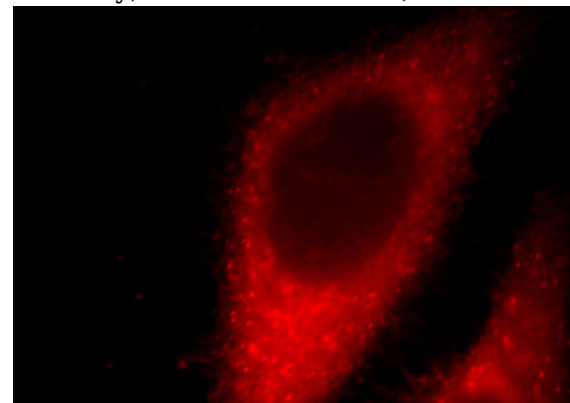
Immunohistochemical of paraffin-embedded human heart using Catalog No:111908(KANK1 antibody) at dilution of 1:50 (under 10x lens)

Ig Type

Rabbit IgG

Applications

ELISA, IF, IHC, WB



Dilutions

Recommended Dilution:

WB: 1:500-1:5000

Immunofluorescent analysis of HepG2 cells, using KANK1 antibody Catalog No:111908 at 1:25

KANK1 antibody



Catalog Number: 111908

dilution and Rhodamine-labeled goat anti-rabbit IgG (red).