

Kallikrein 2 antibody



Catalog Number: 111903

Product name

Kallikrein 2 antibody

Specificity

Human, Mouse; other species not tested.

Antibody description

Kallikrein 2 Rabbit Polyclonal antibody. Positive IHC detected in human prostate cancer tissue. Positive WB detected in mouse pancreas tissue. Observed molecular weight by Western-blot: 29 kda

Preparation

This antibody was obtained by immunization of Kallikrein 2 recombinant protein (Accession Number: NM_005551). Purification method: Antigen affinity purified.

Formulation

PBS with 0.1% sodium azide and 50% glycerol pH 7.3.

Storage

Store at -20°C. DO NOT ALIQUOT

Clonality

Polyclonal

Ig Type

Rabbit IgG

Applications

ELISA, IHC, WB

Dilutions

Recommended Dilution:

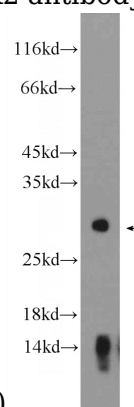
WB: 1:200-1:1000

IHC: 1:20-1:200

Validations



Immunohistochemical of paraffin-embedded human prostate cancer using Catalog No:111903(KLK2 antibody) at dilution of 1:100



(under 10x lens)

mouse pancreas tissue were subjected to SDS PAGE followed by western blot with Catalog No:111903(KLK2 Antibody) at dilution of 1:300