

Kallikrein 11 antibody

Catalog Number: 111902

Product name

Kallikrein 11 antibody

IHC: 1:20-1:200

IF: 1:10-1:100

Specificity

Human, Mouse, Rat; other species not tested.

Antibody description

Kallikrein 11 Rabbit Polyclonal antibody. Positive WB detected in MCF7 cells, HeLa cells, PC-3 cells, Y79 cells. Positive IHC detected in human prostate cancer tissue, human brain tissue. Positive IF detected in PC-3 cells. Observed molecular weight by Western-blot: 40kd

Preparation

This antibody was obtained by immunization of Kallikrein 11 recombinant protein (Accession Number: NM_001136032). Purification method: Antigen affinity purified.

Formulation

PBS with 0.1% sodium azide and 50% glycerol pH 7.3.

Storage

Store at -20°C. DO NOT ALIQUOT

Clonality

Polyclonal

Ig Type

Rabbit IgG

Applications

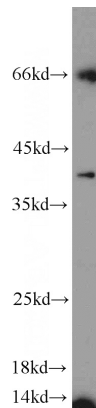
ELISA, WB, IHC, IF

Dilutions

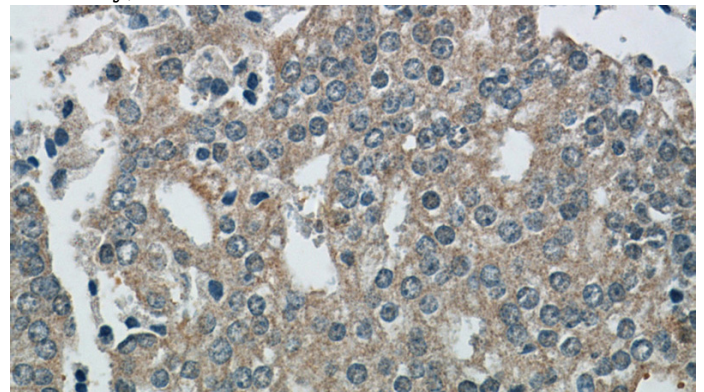
Recommended Dilution:

WB: 1:500-1:5000

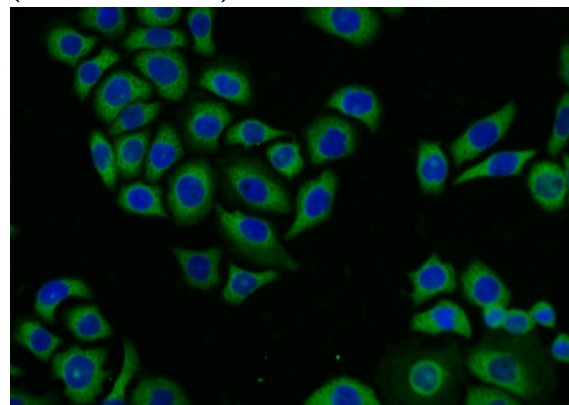
Validations



MCF7 cells were subjected to SDS PAGE followed by western blot with Catalog No:111902(KLK11 antibody) at dilution of 1:1000



Immunohistochemical of paraffin-embedded human prostate cancer using Catalog No:111902(KLK11 antibody) at dilution of 1:200 (under 40x lens)



Immunofluorescent analysis of PC-3 cells using

Kallikrein 11 antibody



Catalog Number: 111902

Catalog No:111902(KLK11 Antibody) at dilution of 1:25 and Alexa Fluor 488-conjugated AffiniPure Goat Anti-Rabbit IgG(H+L)