

Kallikrein 1 antibody

Catalog Number: 111901

Product name

Kallikrein 1 antibody

IP: 1:200-1:2000

IHC: 1:20-1:200

Specificity

Human; other species not tested.

Antibody description

Kallikrein 1 Rabbit Polyclonal antibody. Positive IHC detected in human pancreas cancer tissue. Positive IP detected in BxPC-3 cells. Positive WB detected in A375 cells, BxPC-3 cells. Observed molecular weight by Western-blot: 45-50kd

Preparation

This antibody was obtained by immunization of Kallikrein 1 recombinant protein (Accession Number: NM_002257). Purification method: Antigen affinity purified.

Formulation

PBS with 0.1% sodium azide and 50% glycerol pH 7.3.

Storage

Store at -20°C. DO NOT ALIQUOT

Clonality

Polyclonal

Ig Type

Rabbit IgG

Applications

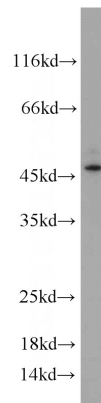
ELISA, WB, IHC, IP

Dilutions

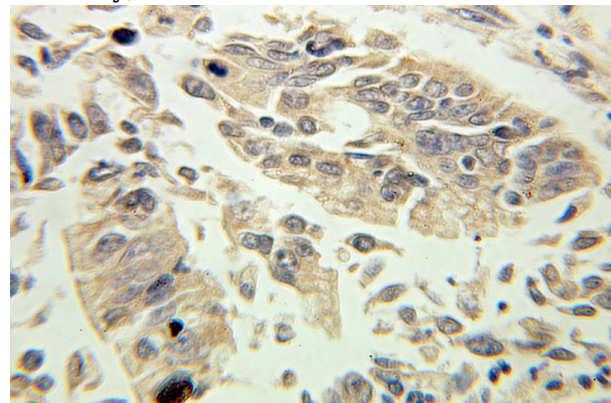
Recommended Dilution:

WB: 1:200-1:2000

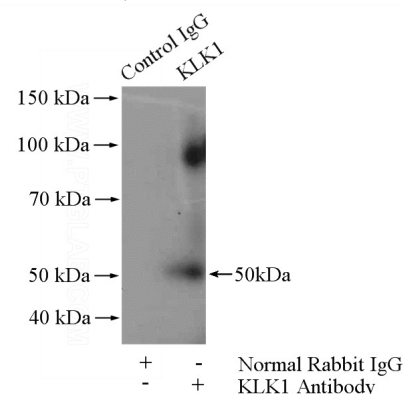
Validations



A375 cells were subjected to SDS PAGE followed by western blot with Catalog No:111901(KLK1 antibody) at dilution of 1:500



Immunohistochemical of paraffin-embedded human pancreas cancer using Catalog No:111901(KLK1 antibody) at dilution of 1:100 (under 40x lens)



IP Result of anti-KLK1 (IP:Catalog No:111901,

Kallikrein 1 antibody



Catalog Number: 111901

4ug; Detection:Catalog No:111901 1:500) with BxPC-3 cells lysate 1520ug.