

JUN antibody



Catalog Number: 111899

Product name

IP: 1:500-1:5000

JUN antibody

IHC: 1:20-1:200

Specificity

IF: 1:10-1:100

Human, hamster, Mouse; other species not tested.

Antibody description

JUN Rabbit Polyclonal antibody. Positive IF detected in NIH/3T3 cells. Positive IHC detected in human cervical cancer tissue, human breast cancer tissue. Positive WB detected in HeLa cells. Positive IP detected in HeLa cells. Observed molecular weight by Western-blot: 39 kDa

Preparation

This antibody was obtained by immunization of JUN recombinant protein (Accession Number: NM_002228). Purification method: Antigen affinity purified.

Formulation

PBS with 0.1% sodium azide and 50% glycerol pH 7.3.

Storage

Store at -20°C. DO NOT ALIQUOT

Clonality

Polyclonal

Ig Type

Rabbit IgG

Applications

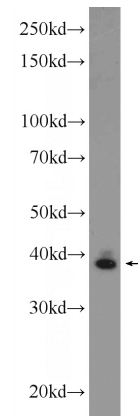
ELISA, WB, IF, IHC, IP

Dilutions

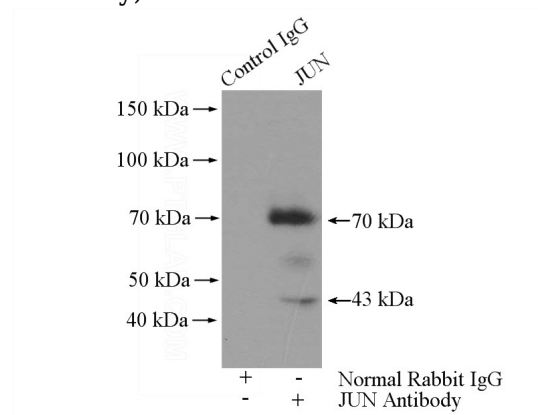
Recommended Dilution:

WB: 1:500-1:5000

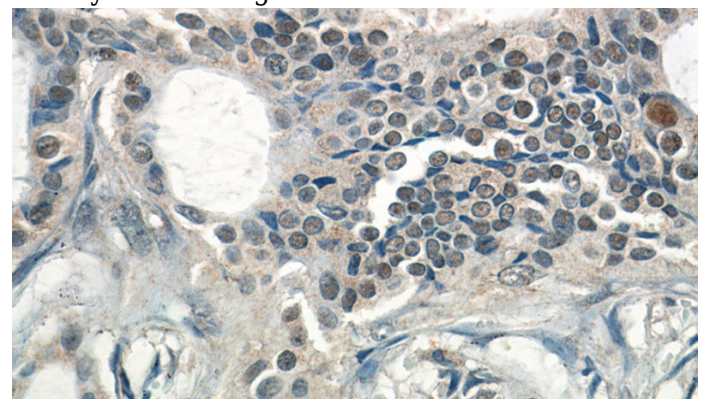
Validations



HeLa cells were subjected to SDS PAGE followed by western blot with Catalog No:111899(JUN Antibody) at dilution of 1:1000



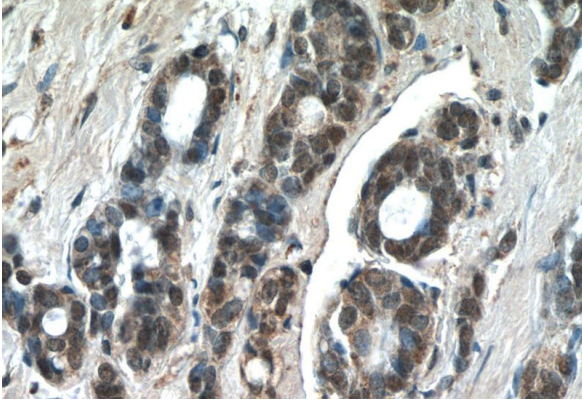
IP Result of anti-JUN (IP:Catalog No:111899, 4ug; Detection:Catalog No:111899 1:1000) with HeLa cells lysate 2400ug.



JUN antibody

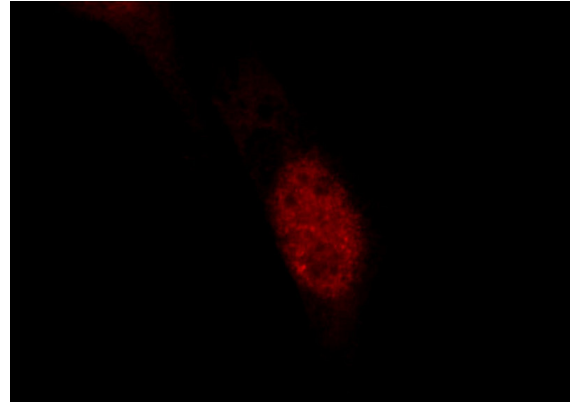
Catalog Number: 111899

Immunohistochemistry of paraffin-embedded human breast cancer tissue slide using Catalog No:111899(JUN Antibody) at dilution of 1:50 (under 40x lens)



Immunohistochemistry of paraffin-embedded human cervical cancer tissue slide using Catalog

No:111899(JUN Antibody) at dilution of 1:50 (under 40x lens)



Immunofluorescent analysis of NIH/3T3 cells using Catalog No:111899(JUN Antibody) at dilution of 1:25 and Rhodamine-Goat anti-Rabbit IgG