

# JTV1 antibody



Catalog Number: 111898

## Product name

Recommended Dilution:

JTV1 antibody

WB: 1:200-1:2000

## Specificity

IP: 1:500-1:5000

Human, Mouse, Rat; other species not tested.

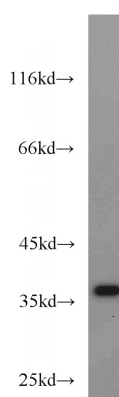
IHC: 1:20-1:200

## Antibody description

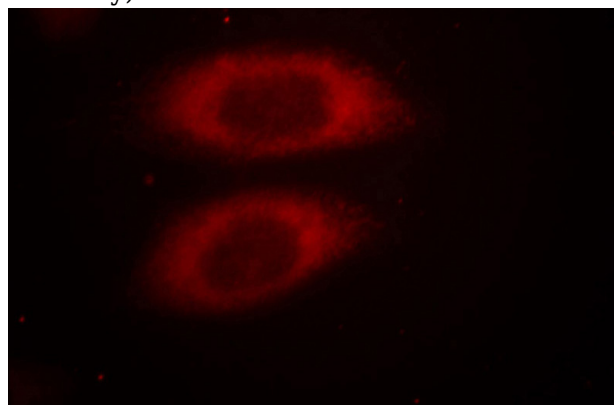
IF: 1:10-1:100

JTV1 Rabbit Polyclonal antibody. Positive IHC detected in human testis tissue, human cerebellum tissue, human kidney tissue. Positive IF detected in HeLa cells, HepG2 cells. Positive IP detected in HeLa cells. Positive WB detected in HeLa cells, HepG2 cells, K-562 cells, L02 cells, mouse liver tissue, NIH/3T3 cells, rat liver tissue. Observed molecular weight by Western-blot: 36 kDa

## Validations



HeLa cells were subjected to SDS PAGE followed by western blot with Catalog No:111898(JTV1 antibody) at dilution of 1:1000



Immunofluorescent analysis of HeLa cells, using JTV1 antibody Catalog No:111898 at 1:25 dilution and Rhodamine-labeled goat anti-rabbit IgG (red).

## Preparation

This antibody was obtained by immunization of JTV1 recombinant protein (Accession Number: NM\_006303). Purification method: Antigen affinity purified.

## Formulation

PBS with 0.1% sodium azide and 50% glycerol pH 7.3.

## Storage

Store at -20°C. DO NOT ALIQUOT

## Clonality

Polyclonal

## Ig Type

Rabbit IgG

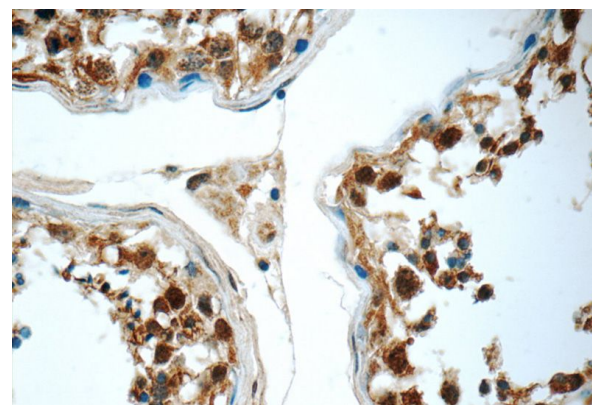
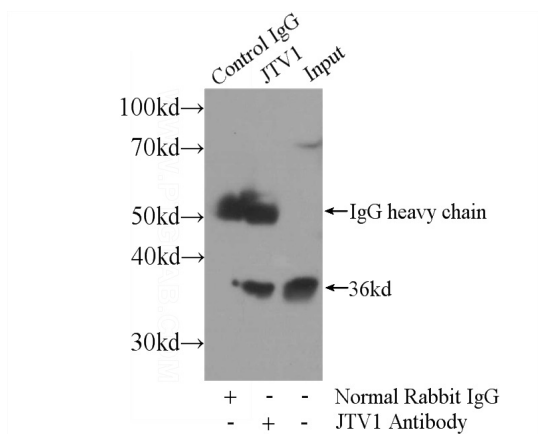
## Applications

ELISA, WB, IF, IHC, IP

## Dilutions

# JTV1 antibody

Catalog Number: 111898



IP Result of anti-JTV1 (IP:Catalog No:111898, 3ug; Detection:Catalog No:111898 1:1000) with HeLa cells lysate 800ug.

Immunohistochemistry of paraffin-embedded human testis tissue slide using Catalog No:111898(JTV1 Antibody) at dilution of 1:50 (under 40x lens)