

JP45/JSRP1 antibody



Catalog Number: 111895

Product name

ELISA, IHC, WB

JP45/JSRP1 antibody

Dilutions

Specificity

Recommended Dilution:

Human; other species not tested.

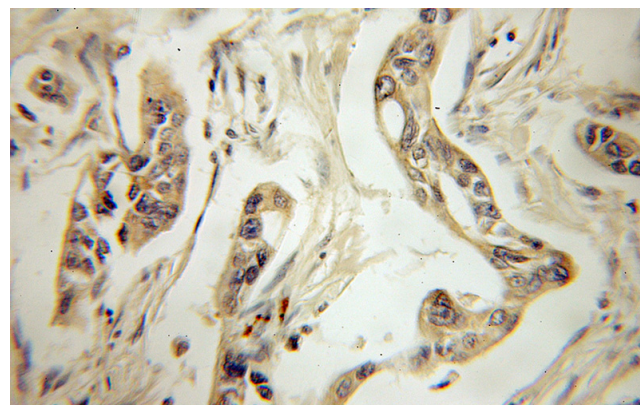
WB: 1:200-1:2000

IHC: 1:20-1:200

Antibody description

Validations

JP45/JSRP1 Rabbit Polyclonal antibody. Positive IHC detected in human pancreas cancer tissue. Positive WB detected in human skeletal muscle tissue. Observed molecular weight by Western-blot: 30kd



Preparation

This antibody was obtained by immunization of JP45/JSRP1 recombinant protein (Accession Number: NM_144616). Purification method: Antigen affinity purified.

Immunohistochemical of paraffin-embedded human pancreas cancer using Catalog No:111895(JP45; JSRP1 antibody) at dilution of

Formulation

PBS with 0.1% sodium azide and 50% glycerol pH 7.3.

Storage

Store at -20°C. DO NOT ALIQUOT

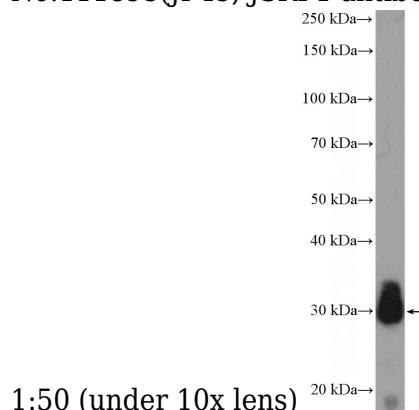
Clonality

Polyclonal

Ig Type

Rabbit IgG

Applications



1:50 (under 10x lens)

human skeletal muscle tissue were subjected to SDS PAGE followed by western blot with Catalog No:111895(JP45; JSRP1 Antibody) at dilution of 1:600