

JMJD6 antibody



Catalog Number: 111888

Product name

IP: 1:200-1:2000

JMJD6 antibody

IHC: 1:20-1:200

Specificity

Human, Mouse, Rat; other species not tested.

Antibody description

JMJD6 Rabbit Polyclonal antibody. Positive FC detected in K-562 cells. Positive IHC detected in human heart tissue. Positive IP detected in K-562 cells. Positive WB detected in mouse liver tissue. Observed molecular weight by Western-blot: 46kd

Preparation

This antibody was obtained by immunization of JMJD6 recombinant protein (Accession Number: NM_015167). Purification method: Antigen affinity purified.

Formulation

PBS with 0.02% sodium azide and 50% glycerol pH 7.3.

Storage

Store at -20°C. DO NOT ALIQUOT

Clonality

Polyclonal

Ig Type

Rabbit IgG

Applications

ELISA, WB, IHC, FC, IP

Dilutions

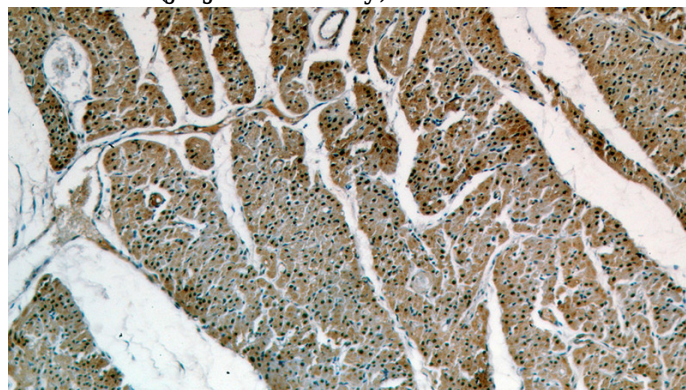
Recommended Dilution:

WB: 1:200-1:2000

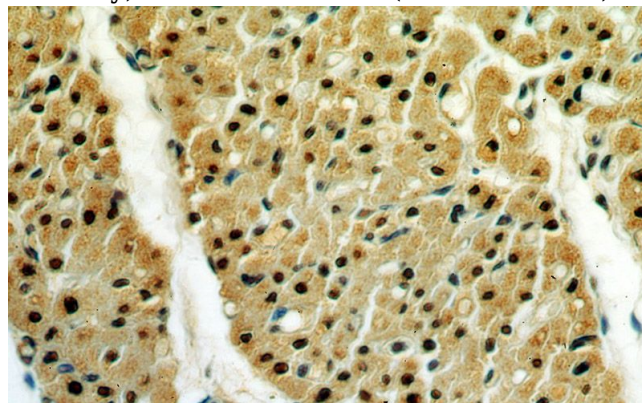
Validations



mouse liver tissue were subjected to SDS PAGE followed by western blot with Catalog No:111888(JMJD6 antibody) at dilution of 1:500



Immunohistochemical of paraffin-embedded human heart using Catalog No:111888(JMJD6 antibody) at dilution of 1:50 (under 10x lens)



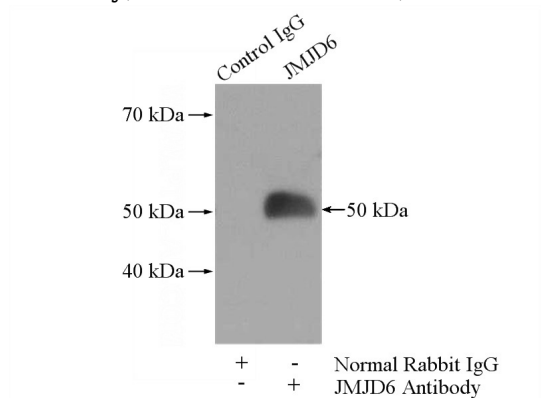
Immunohistochemical of paraffin-embedded human heart using Catalog No:111888(JMJD6

JMJD6 antibody

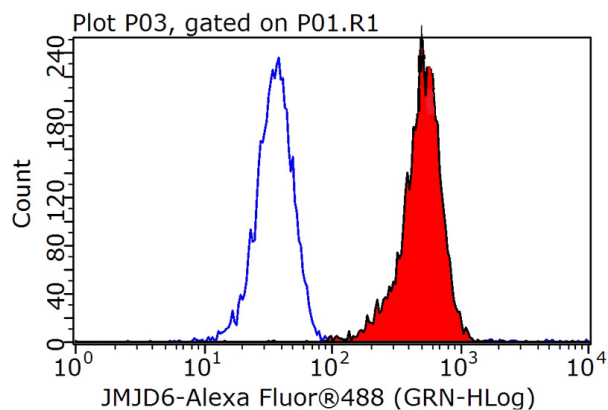


Catalog Number: 111888

antibody) at dilution of 1:50 (under 40x lens)



IP Result of anti-JMJD6 (IP:Catalog No:111888, 4ug; Detection:Catalog No:111888 1:500) with K-562 cells lysate 1200ug.



1X10⁶ K-562 cells were stained with 0.2ug JMJD6 antibody (Catalog No:111888, red) and control antibody (blue). Fixed with 90% MeOH blocked with 3% BSA (30 min). Alexa Fluor 488-conjugated AffiniPure Goat Anti-Rabbit IgG(H+L) with dilution 1:1000.