

JIP1 antibody

Catalog Number: 111884

Product name

IHC: 1:20-1:200

JIP1 antibody

IF: 1:10-1:100

Specificity

Human, Mouse, Rat; other species not tested.

Antibody description

JIP1 Rabbit Polyclonal antibody. Positive IF detected in PC-12 cells. Positive IHC detected in mouse brain tissue, human oesophagus cancer tissue, human pancreas tissue. Positive WB detected in fetal human brain tissue. Observed molecular weight by Western-blot: 110 kDa

Preparation

This antibody was obtained by immunization of JIP1 recombinant protein (Accession Number: NM_005456). Purification method: Antigen affinity purified.

Formulation

PBS with 0.02% sodium azide and 50% glycerol pH 7.3.

Storage

Store at -20°C. DO NOT ALIQUOT

Clonality

Polyclonal

Ig Type

Rabbit IgG

Applications

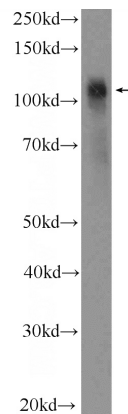
ELISA, IHC, WB, IF

Dilutions

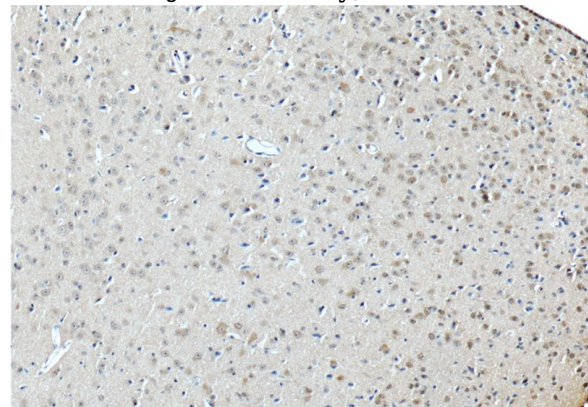
Recommended Dilution:

WB: 1:200-1:1000

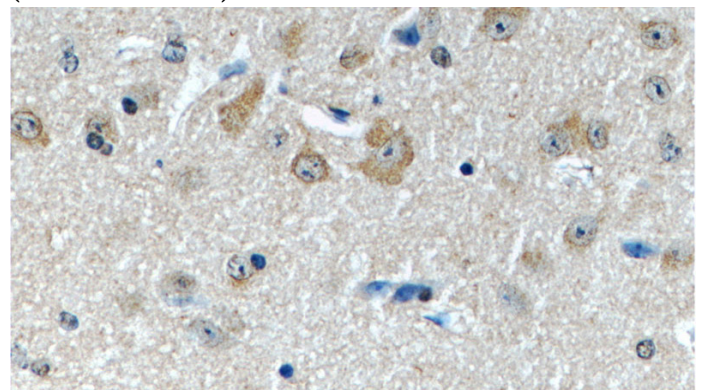
Validations



fetal human brain tissue were subjected to SDS PAGE followed by western blot with Catalog No:111884(JIP1 Antibody) at dilution of 1:300



Immunohistochemistry of paraffin-embedded mouse brain tissue slide using Catalog No:111884(JIP1 Antibody) at dilution of 1:50 (under 10x lens)

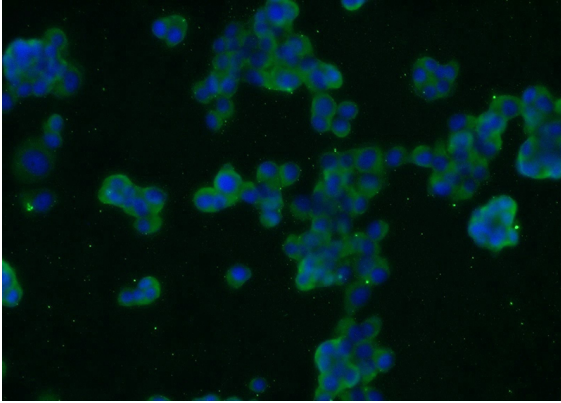


Immunohistochemistry of paraffin-embedded

JIP1 antibody

Catalog Number: 111884

mouse brain tissue slide using Catalog No:111884(JIP1 Antibody) at dilution of 1:50 (under 40x lens)



Immunofluorescent analysis of PC-12 cells using Catalog No:111884(JIP1 Antibody) at dilution of 1:25 and Alexa Fluor 488-conjugated AffiniPure Goat Anti-Rabbit IgG(H+L)