

Integrin beta-3 antibody



Catalog Number: 111863

Product name

Integrin beta-3 antibody

Specificity

Human, Mouse, Rat; other species not tested.

Antibody description

Integrin beta-3 Rabbit Polyclonal antibody.
Positive WB detected in human placenta tissue.
Positive IHC detected in human testis tissue.
Observed molecular weight by Western-blot: 140 kDa

Preparation

This antibody was obtained by immunization of Peptide (Accession Number: NM_000212).
Purification method: Antigen affinity purified.

Formulation

PBS with 0.02% sodium azide and 50% glycerol
pH 7.3.

Storage

Store at -20°C. DO NOT ALIQUOT

Clonality

Polyclonal

Ig Type

Rabbit IgG

Applications

ELISA, WB, IHC

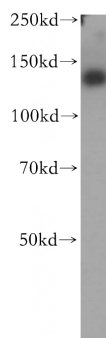
Dilutions

Recommended Dilution:

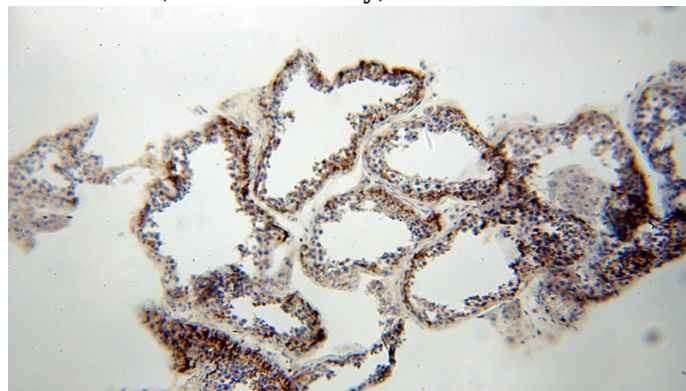
WB: 1:500-1:5000

IHC: 1:20-1:200

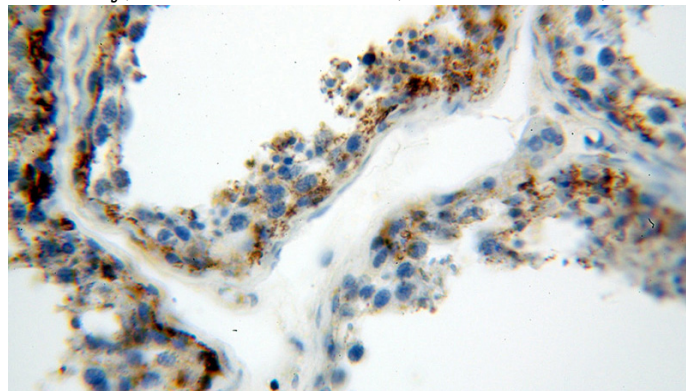
Validations



human placenta tissue were subjected to SDS PAGE followed by western blot with Catalog No:111863(ITGB3 antibody) at dilution of 1:300



Immunohistochemical of paraffin-embedded human testis using Catalog No:111863(ITGB3 antibody) at dilution of 1:50 (under 10x lens)



Immunohistochemical of paraffin-embedded human testis using Catalog No:111863(ITGB3 antibody) at dilution of 1:50 (under 40x lens)