

# Integrin alpha-1 antibody



Catalog Number: 111857

## Product name

Integrin alpha-1 antibody

## Specificity

Human; other species not tested.

## Antibody description

Integrin alpha-1 Rabbit Polyclonal antibody.  
Positive IHC detected in human tonsillitis tissue.  
Positive FC detected in HeLa cells. Positive WB detected in HepG2 cells, SMMC-7721 cells.  
Observed molecular weight by Western-blot: 180 kDa

## Preparation

This antibody was obtained by immunization of Integrin alpha-1 recombinant protein (Accession Number: NM\_181501). Purification method: Antigen Affinity purified.

## Formulation

PBS with 0.02% sodium azide and 50% glycerol pH 7.3.

## Storage

Store at -20°C. DO NOT ALIQUOT

## Clonality

Polyclonal

## Ig Type

Rabbit IgG

## Applications

ELISA, WB, IHC, FC

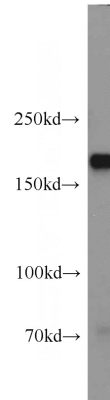
## Dilutions

Recommended Dilution:

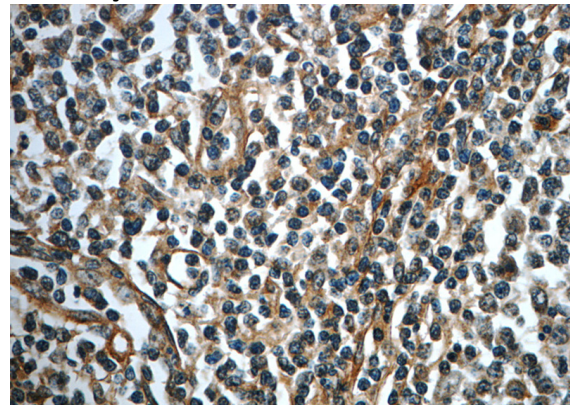
WB: 1:500-1:5000

IHC: 1:20-1:200

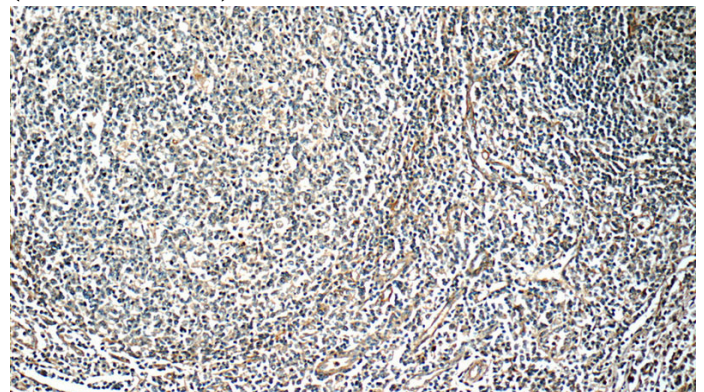
## Validations



HepG2 cells were subjected to SDS PAGE followed by western blot with Catalog No:111857(ITGA1 antibody) at dilution of 1:1000



Immunohistochemistry of paraffin-embedded human tonsillitis slide using Catalog No:111857(ITGA1 Antibody) at dilution of 1:50 (under 40x lens)

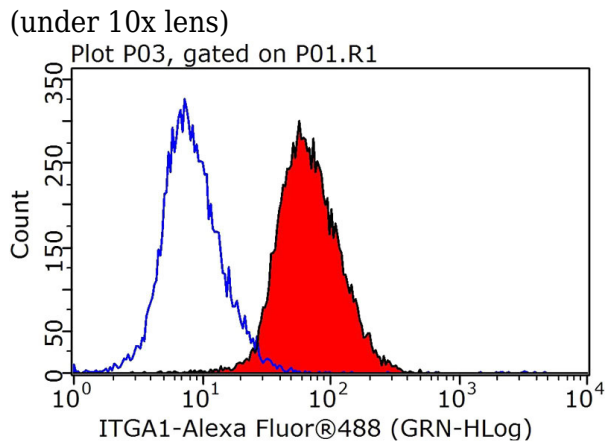


Immunohistochemistry of paraffin-embedded human tonsillitis slide using Catalog No:111857(ITGA1 Antibody) at dilution of 1:50

# Integrin alpha-1 antibody



Catalog Number: 111857



1X10<sup>6</sup> HeLa cells were stained with 0.2ug Integrin alpha-1 antibody (Catalog No:111857, red) and control antibody (blue). Fixed with 90% MeOH blocked with 3% BSA (30 min). Alexa Fluor 488-conjugated AffiniPure Goat Anti-Rabbit IgG(H+L) with dilution 1:1000.