

Integrin alpha 6X1A-Specific antibody



Catalog Number: 111855

Product name

Integrin alpha 6X1A-Specific antibody

Specificity

Human, Mouse; other species not tested.

Antibody description

Integrin alpha 6X1A-Specific Rabbit Polyclonal antibody. Positive WB detected in mouse spleen tissue, mouse colon tissue. Observed molecular weight by Western-blot: 100 kDa, 150 kDa

Preparation

This antibody was obtained by immunization of Peptide (Accession Number: NM_000210). Purification method: Antigen affinity purified.

Formulation

PBS with 0.02% sodium azide and 50% glycerol pH 7.3.

Storage

Store at -20°C. DO NOT ALIQUOT

Clonality

Polyclonal

Ig Type

Rabbit IgG

Applications

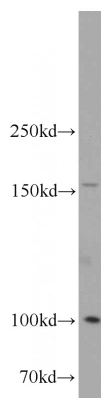
ELISA, WB

Dilutions

Recommended Dilution:

WB: 1:200-1:1000

Validations



mouse spleen tissue were subjected to SDS PAGE followed by western blot with Catalog No:111855(ITGA6-Specific antibody) at dilution of 1:300