

# IRF8 antibody



Catalog Number: 111840

## Product name

Polyclonal

IRF8 antibody

## Ig Type

## Specificity

Rabbit IgG

Human; other species not tested.

## Applications

## Antibody description

ELISA, WB

IRF8 Rabbit Polyclonal antibody. Positive WB detected in Raji cells. Observed molecular weight by Western-blot: 50kd

## Dilutions

Recommended Dilution:

## Preparation

WB: 1:500-1:5000

This antibody was obtained by immunization of IRF8 recombinant protein (Accession Number: NM\_002163). Purification method: Antigen affinity purified.

## Validations

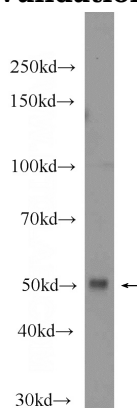
## Formulation

PBS with 0.1% sodium azide and 50% glycerol pH 7.3.

## Storage

Store at -20°C. DO NOT ALIQUOT

## Clonality



Raji cells were subjected to SDS PAGE followed by western blot with Catalog No:111840(IRF8 Antibody) at dilution of 1:1000