

# IRF5 antibody



Catalog Number: 111837

## Product name

IRF5 antibody

Recommended Dilution:

WB: 1:200-1:2000

## Specificity

Human, Mouse, Rat; other species not tested.

IP: 1:200-1:1000

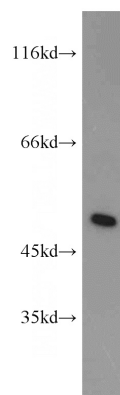
IHC: 1:20-1:200

## Antibody description

IRF5 Rabbit Polyclonal antibody. Positive FC detected in HepG2 cells. Positive IHC detected in human breast cancer tissue. Positive IF detected in HepG2 cells. Positive WB detected in Jurkat cells, A549 cells, HeLa cells, human heart tissue, NIH/3T3 cells, SH-SY5Y cells. Positive IP detected in HeLa cells. Observed molecular weight by Western-blot: 47-50 kDa

IF: 1:10-1:100

## Validations



Jurkat cells were subjected to SDS PAGE followed by western blot with Catalog No:111837(IRF5 antibody) at dilution of 1:800

## Preparation

This antibody was obtained by immunization of IRF5 recombinant protein (Accession Number: XM\_047420339). Purification method: Antigen affinity purified.

## Formulation

PBS with 0.1% sodium azide and 50% glycerol pH 7.3.

## Storage

Store at -20°C. DO NOT ALIQUOT

## Clonality

Polyclonal

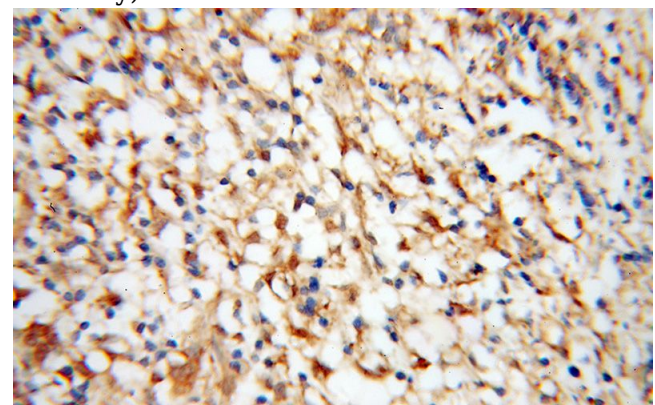
## Ig Type

Rabbit IgG

## Applications

ELISA, WB, IHC, IF, FC, IP

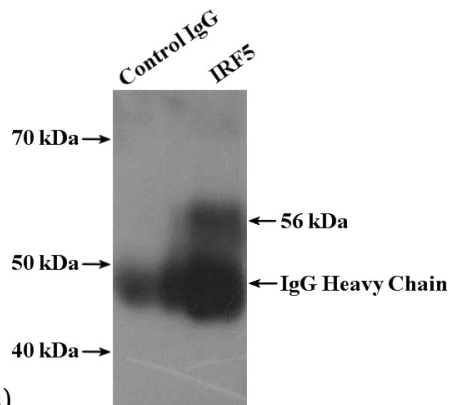
## Dilutions



Immunohistochemical of paraffin-embedded human breast cancer using Catalog No:111837(IRF5 antibody) at dilution of 1:50

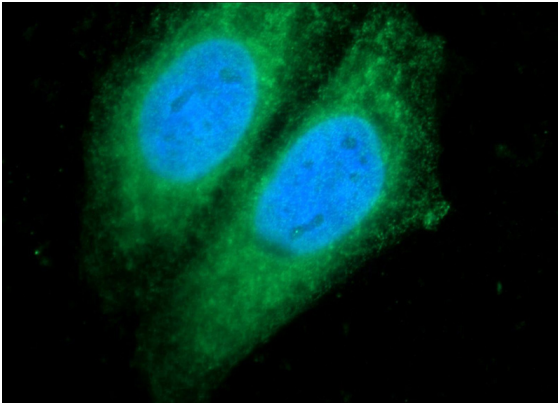
# IRF5 antibody

Catalog Number: 111837

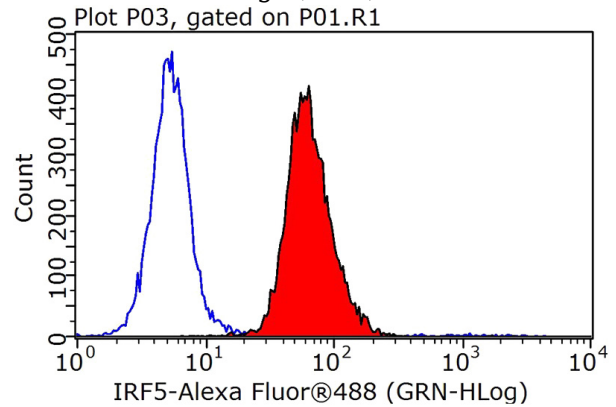


(under 40x lens)

IP Result of anti-IRF5 (IP:Catalog No:111837, 4ug;  
Detection:Catalog No:111837 1:300) with HeLa  
cells lysate 1600ug.



Immunofluorescent analysis of HepG2 cells using  
Catalog No:111837(IRF5 Antibody) at dilution of  
1:25 and Alexa Fluor 488-conjugated AffiniPure  
Goat Anti-Rabbit IgG(H+L)



1X10<sup>6</sup> HepG2 cells were stained with 0.2ug  
IRF5 antibody (Catalog No:111837, red) and  
control antibody (blue). Fixed with 90% MeOH  
blocked with 3% BSA (30 min). Alexa Fluor 488-  
conjugated AffiniPure Goat Anti-Rabbit IgG(H+L)  
with dilution 1:1000.