

# IRF4 antibody



Catalog Number: 111836

## Product name

IRF4 antibody

Recommended Dilution:

WB: 1:500-1:5000

## Specificity

Human, Mouse; other species not tested.

IP: 1:200-1:2000

IHC: 1:20-1:200

## Antibody description

IRF4 Rabbit Polyclonal antibody. Positive FC detected in Raji cells. Positive IHC detected in human lymphoma tissue, human tonsillitis tissue. Positive WB detected in mouse spleen tissue, Jurkat cells, mouse lung tissue, mouse thymus tissue, Raji cells, RAW264.7 cells. Positive IP detected in mouse spleen tissue. Observed molecular weight by Western-blot: 50-52 kDa

## Preparation

This antibody was obtained by immunization of IRF4 recombinant protein (Accession Number: NM\_002460). Purification method: Antigen affinity purified.

## Formulation

PBS with 0.1% sodium azide and 50% glycerol pH 7.3.

## Storage

Store at -20°C. DO NOT ALIQUOT

## Clonality

Polyclonal

## Ig Type

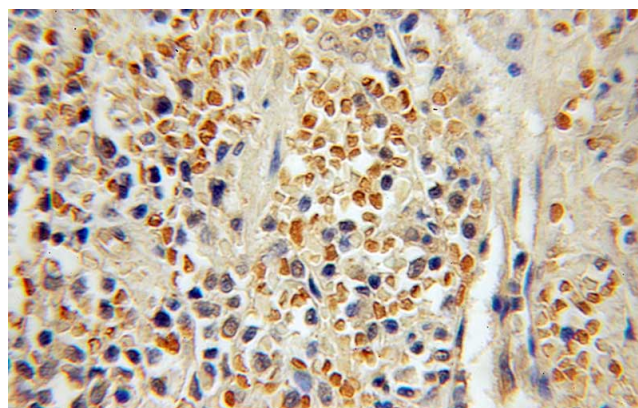
Rabbit IgG

## Applications

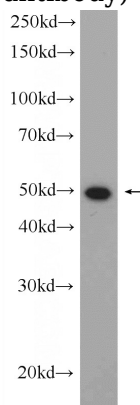
ELISA, IHC, WB, IP, FC

## Dilutions

## Validations



Immunohistochemical of paraffin-embedded human lymphoma using Catalog No:111836(IRF4 antibody) at dilution of 1:50 (under 25x lens)

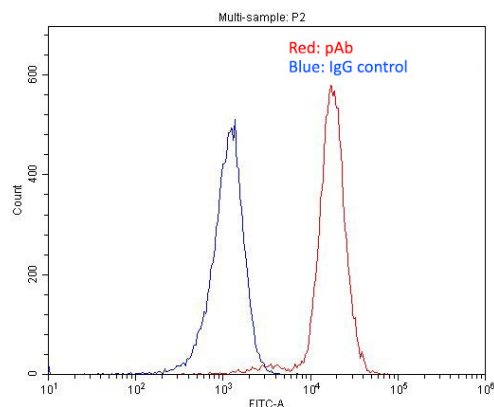
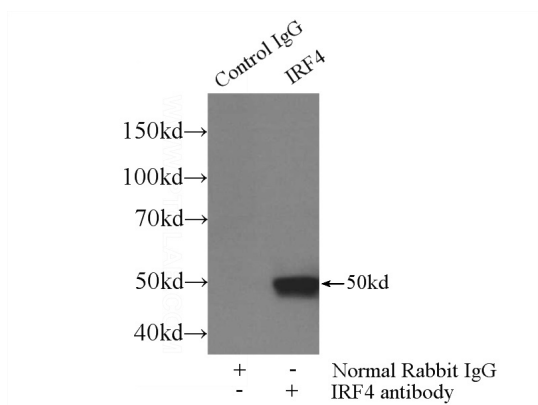


mouse spleen tissue were subjected to SDS PAGE followed by western blot with Catalog No:111836(IRF4 Antibody) at dilution of 1:1000

# IRF4 antibody



Catalog Number: 111836



IP Result of anti-IRF4 (IP:Catalog No:111836, 3ug; Detection:Catalog No:111836 1:500) with mouse spleen tissue lysate 4000ug.

1X10<sup>6</sup> Raji cells were stained with 0.2ug IRF4 antibody (Catalog No:111836, red) and control antibody (blue). Fixed with 4% PFA blocked with 3% BSA (30 min). Alexa Fluor 488-conjugated AffiniPure Goat Anti-Rabbit IgG(H+L) with dilution 1:1500.