

IRF2BP2 antibody



Catalog Number: 111834

Product name

IRF2BP2 antibody

IP: 1:200-1:2000

IHC: 1:20-1:200

Specificity

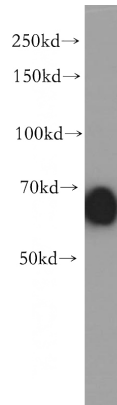
Human, Mouse; other species not tested.

IF: 1:20-1:200

Antibody description

IRF2BP2 Rabbit Polyclonal antibody. Positive WB detected in Jurkat cells, HepG2 cells, K-562 cells. Positive IP detected in K-562 cells. Positive IF detected in HepG2 cells. Positive IHC detected in human lung cancer tissue, human breast cancer tissue. Observed molecular weight by Western-blot: 61 kDa

Validations



Preparation

This antibody was obtained by immunization of Peptide (Accession Number: NM_182972). Purification method: Antigen affinity purified.

Jurkat cells were subjected to SDS PAGE followed by western blot with Catalog No:111834(IRF2BP2 antibody) at dilution of 1:500

Formulation

PBS with 0.02% sodium azide and 50% glycerol pH 7.3.

Storage

Store at -20°C. DO NOT ALIQUOT

Clonality

Polyclonal

Ig Type

Rabbit IgG

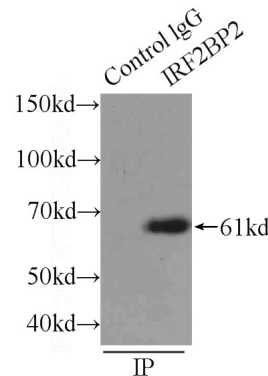
Applications

ELISA, WB, IHC, IP, IF

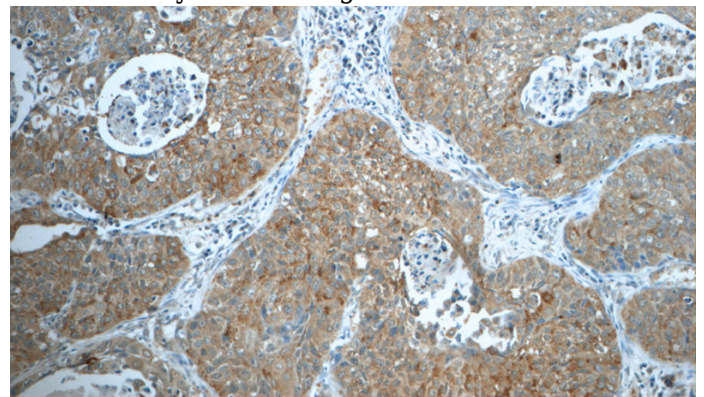
Dilutions

Recommended Dilution:

WB: 1:1000-1:10000



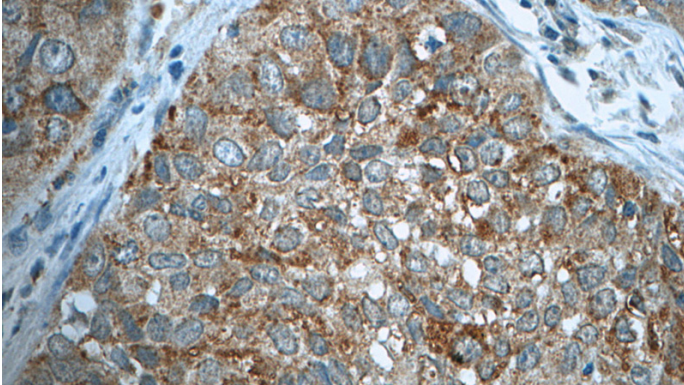
IP Result of anti-IRF2BP2 (IP:Catalog No:111834, 3ug; Detection:Catalog No:111834 1:500) with K-562 cells lysate 2400ug.



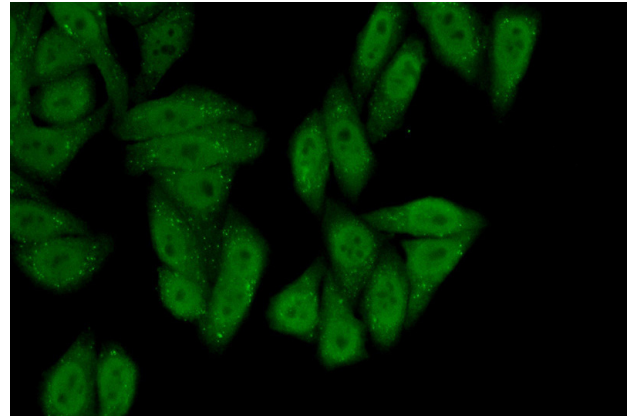
IRF2BP2 antibody

Catalog Number: 111834

Immunohistochemistry of paraffin-embedded human lung cancer tissue slide using Catalog No:111834(IRF2BP2 Antibody) at dilution of 1:50



Immunohistochemistry of paraffin-embedded human lung cancer tissue slide using Catalog No:111834(IRF2BP2 Antibody) at dilution of 1:50



Immunofluorescent analysis of (10% Formaldehyde) fixed HepG2 cells using Catalog No:111834(IRF2BP2 Antibody) at dilution of 1:50 and Alexa Fluor 488-conjugated AffiniPure Goat Anti-Rabbit IgG(H+L)