

IRF2BP1 antibody



Catalog Number: 111833

Product name

IRF2BP1 antibody

WB: 1:200-1:2000

IP: 1:200-1:2000

Specificity

Human, Mouse, Rat; other species not tested.

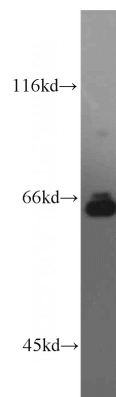
IHC: 1:20-1:200

IF: 1:20-1:200

Antibody description

IRF2BP1 Rabbit Polyclonal antibody. Positive WB detected in HeLa cells, HEK-293 cells, Jurkat cells, mouse brain tissue, rat lymph tissue. Positive IP detected in HEK-293 cells. Positive IF detected in HeLa cells. Positive IHC detected in human endometrial cancer tissue. Observed molecular weight by Western-blot: 62-72 kDa

Validations



Preparation

This antibody was obtained by immunization of IRF2BP1 recombinant protein (Accession Number: NM_015649). Purification method: Antigen affinity purified.

HeLa cells were subjected to SDS PAGE followed by western blot with Catalog No:111833(IRF2BP1 antibody) at dilution of 1:800

Formulation

PBS with 0.02% sodium azide and 50% glycerol pH 7.3.

Storage

Store at -20°C. DO NOT ALIQUOT

Clonality

Polyclonal

Ig Type

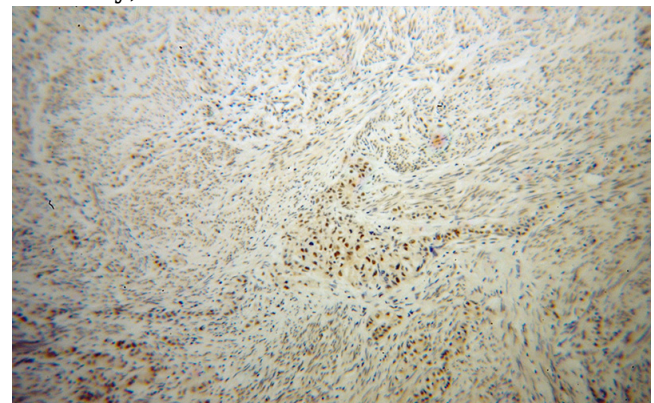
Rabbit IgG

Applications

ELISA, WB, IHC, IF, IP

Dilutions

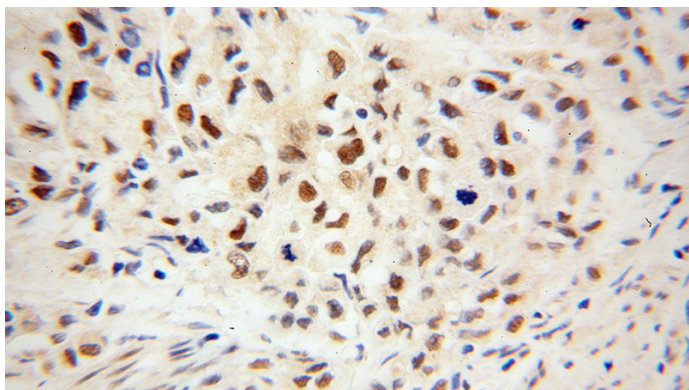
Recommended Dilution:



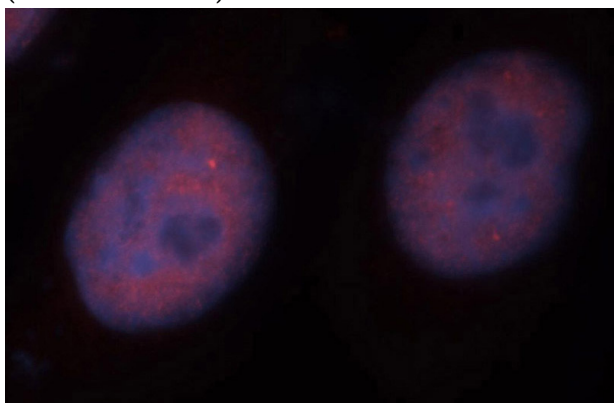
Immunohistochemical of paraffin-embedded human endometrial cancer using Catalog No:111833(IRF2BP1 antibody) at dilution of 1:50 (under 10x lens)

IRF2BP1 antibody

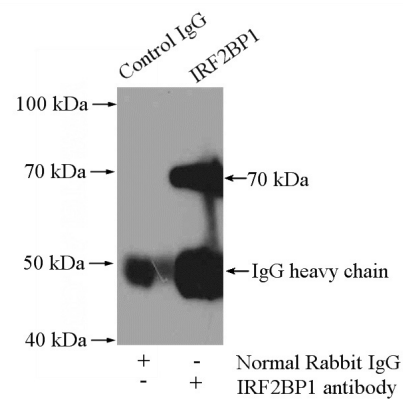
Catalog Number: 111833



Immunohistochemical of paraffin-embedded human endometrial cancer using Catalog No:111833(IRF2BP1 antibody) at dilution of 1:50 (under 40x lens)



Immunofluorescent analysis of HeLa cells, using IRF2BP1 antibody Catalog No:111833 at 1:50 dilution and Rhodamine-labeled goat anti-rabbit IgG (red). Blue pseudocolor = DAPI (fluorescent



DNA dye).

IP Result of anti-IRF2BP1 (IP:Catalog No:111833, 4ug; Detection:Catalog No:111833 1:500) with HEK-293 cells lysate 2000ug.