

IRF1 antibody

Catalog Number: 111831

Product name

IRF1 antibody

Specificity

Human, Mouse, Rat; other species not tested.

Antibody description

IRF1 Rabbit Polyclonal antibody. Positive WB detected in Raji cells, Jurkat cells. Positive IHC detected in human breast cancer tissue. Observed molecular weight by Western-blot: 45-50 kDa

Preparation

This antibody was obtained by immunization of IRF1 recombinant protein (Accession Number: NM_002198). Purification method: Antigen affinity purified.

Formulation

PBS with 0.1% sodium azide and 50% glycerol pH 7.3.

Storage

Store at -20°C. DO NOT ALIQUOT

Clonality

Polyclonal

Ig Type

Rabbit IgG

Applications

ELISA, WB, IHC

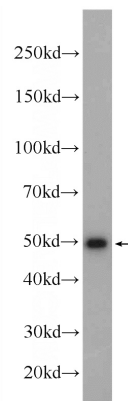
Dilutions

Recommended Dilution:

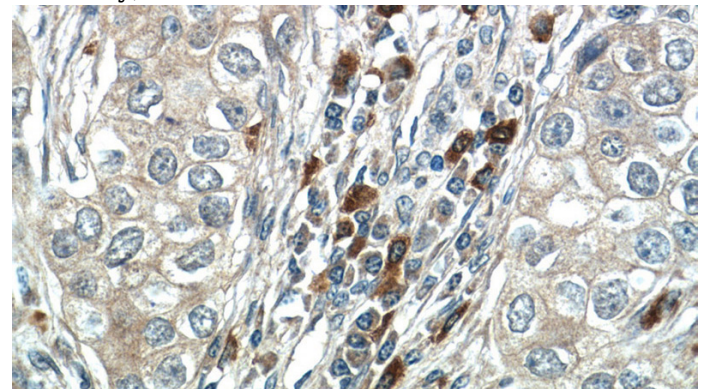
WB: 1:200-1:1000

IHC: 1:20-1:200

Validations



Raji cells were subjected to SDS PAGE followed by western blot with Catalog No:111831(IRF1 Antibody) at dilution of 1:300



Immunohistochemistry of paraffin-embedded human breast cancer tissue slide using Catalog No:111831(IRF1 Antibody) at dilution of 1:50 (under 40x lens)