

IP6K1 antibody

Catalog Number: 111815

Product name

IP6K1 antibody

Specificity

Human, Mouse, Rat; other species not tested.

Antibody description

IP6K1 Rabbit Polyclonal antibody. Positive IHC detected in human lung cancer tissue. Positive WB detected in human kidney tissue, human liver tissue. Observed molecular weight by Western-blot: 54 kDa

Preparation

This antibody was obtained by immunization of IP6K1 recombinant protein (Accession Number: XM_047449324). Purification method: Antigen affinity purified.

Formulation

PBS with 0.1% sodium azide and 50% glycerol pH 7.3.

Storage

Store at -20°C. DO NOT ALIQUOT

Clonality

Polyclonal

Ig Type

Rabbit IgG

Applications

ELISA, WB, IHC

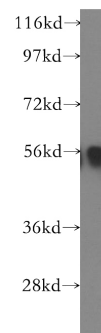
Dilutions

Recommended Dilution:

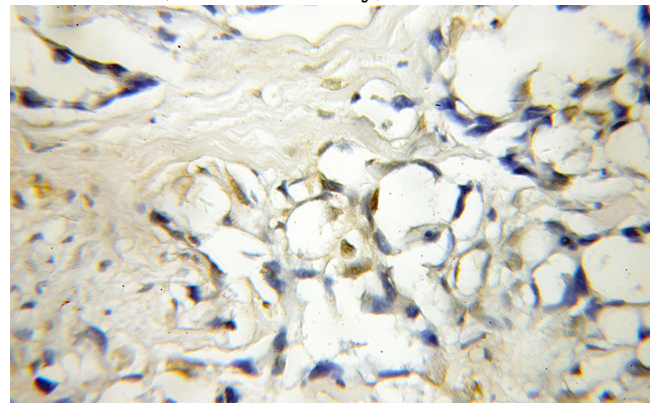
WB: 1:500-1:5000

IHC: 1:20-1:200

Validations



human kidney tissue were subjected to SDS PAGE followed by western blot with Catalog No:111815(IP6K1 antibody) at dilution of 1:300



Immunohistochemical of paraffin-embedded human lung cancer using Catalog No:111815(IP6K1 antibody) at dilution of 1:50 (under 10x lens)