

INVS antibody



Catalog Number: 111814

Product name

INVS antibody

Recommended Dilution:

WB: 1:200-1:1000

Specificity

Human, Mouse, Rat; other species not tested.

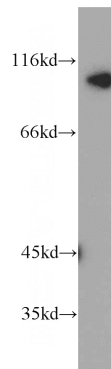
IHC: 1:20-1:200

IF: 1:10-1:100

Antibody description

INVS Rabbit Polyclonal antibody. Positive WB detected in MCF7 cells, HepG2 cells, Jurkat cells, K-562 cells, L02 cells, mouse skeletal muscle tissue, Raji cells, SH-SY5Y cells. Positive IHC detected in human breast cancer tissue, human hepat°Cirrhosis tissue. Positive IF detected in Hela cells, hTERT-RPE1 cells. Observed molecular weight by Western-blot: 110-115 kDa

Validations



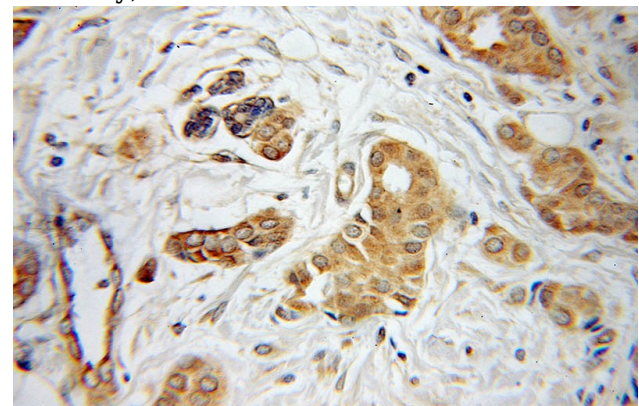
Preparation

This antibody was obtained by immunization of INVS recombinant protein (Accession Number: BC006370). Purification method: Antigen affinity purified.

MCF7 cells were subjected to SDS PAGE followed by western blot with Catalog No:111814(INVS antibody) at dilution of 1:100

Formulation

PBS with 0.1% sodium azide and 50% glycerol pH 7.3.



Immunohistochemical of paraffin-embedded human breast cancer using Catalog No:111814(INVS antibody) at dilution of 1:100

Storage

Store at -20°C. DO NOT ALIQUOT

Clonality

Polyclonal

Ig Type

Rabbit IgG

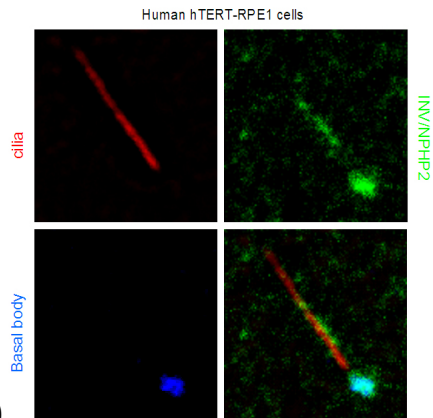
Applications

ELISA, WB, IHC, IF

Dilutions

INVS antibody

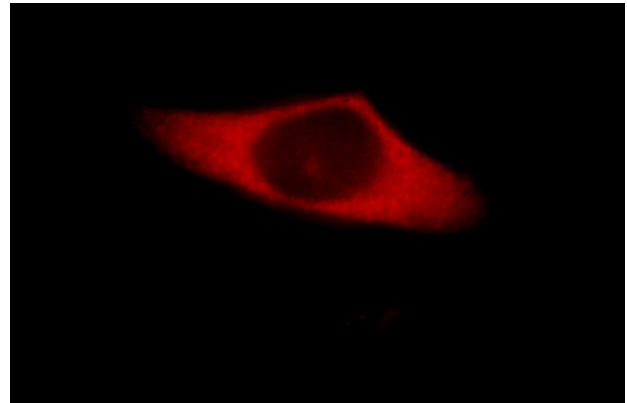
Catalog Number: 111814



(under 25x lens)

IF result from Dr. Corbit, Kevin. anti-INVS(also named as NPHP2; Catalog No:111814) marks the 'inversin compartment' and basal bodies of

Human hTERT-RPE1 cells.



Immunofluorescent analysis of Hela cells, using INVS antibody Catalog No:111814 at 1:25 dilution and Rhodamine-labeled goat anti-rabbit IgG (red).