

Importin beta antibody



Catalog Number: 111787

Product name

Importin beta antibody

Specificity

Human, Mouse, Rat; other species not tested.

Antibody description

Importin beta Rabbit Polyclonal antibody. Positive IHC detected in human colon cancer tissue. Positive WB detected in mouse brain tissue, A2780 cells, HeLa cells, HT-1080 cells, rat brain tissue. Observed molecular weight by Western-blot: 90-97 kDa

Preparation

This antibody was obtained by immunization of Importin beta recombinant protein (Accession Number: NM_002265). Purification method: Antigen affinity purified.

Formulation

PBS with 0.1% sodium azide and 50% glycerol pH 7.3.

Storage

Store at -20°C. DO NOT ALIQUOT

Clonality

Polyclonal

Ig Type

Rabbit IgG

Applications

ELISA, IHC, WB

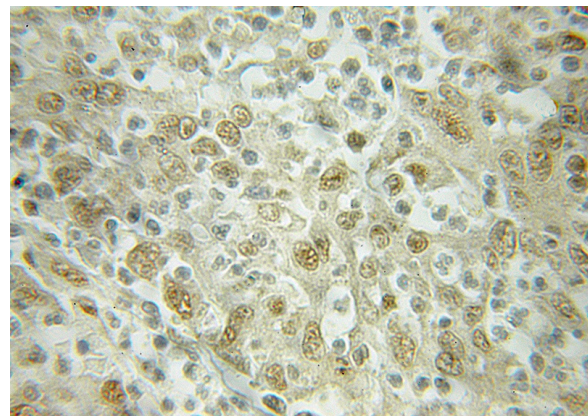
Dilutions

Recommended Dilution:

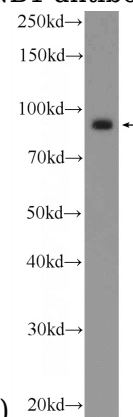
WB: 1:200-1:2000

IHC: 1:20-1:200

Validations



Immunohistochemical of paraffin-embedded human colon cancer using Catalog No:111787(KPNB1 antibody) at dilution of 1:50



(under 10x lens)

mouse brain tissue were subjected to SDS PAGE followed by western blot with Catalog No:111787(KPNB1 Antibody) at dilution of 1:600