

# IMPDH1 antibody



Catalog Number: 111784

## Product name

IMPDH1 antibody

WB: 1:1000-1:10000

IP: 1:1000-1:10000

## Specificity

Human, Mouse, Rat; other species not tested.

IHC: 1:20-1:200

IF: 1:20-1:200

## Antibody description

IMPDH1 Rabbit Polyclonal antibody. Positive WB detected in HeLa cells, A431 cells, mouse spleen tissue. Positive IP detected in HeLa cells. Positive IHC detected in human ovary tumor tissue, human tonsillitis tissue. Positive IF detected in HeLa cells. Observed molecular weight by Western-blot: 53-60 kDa

## Preparation

This antibody was obtained by immunization of IMPDH1 recombinant protein (Accession Number: NM\_183243). Purification method: Antigen affinity purified.

## Formulation

PBS with 0.02% sodium azide and 50% glycerol pH 7.3.

## Storage

Store at -20°C. DO NOT ALIQUOT

## Clonality

Polyclonal

## Ig Type

Rabbit IgG

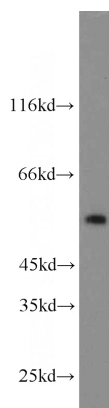
## Applications

ELISA, WB, IHC, IP, IF

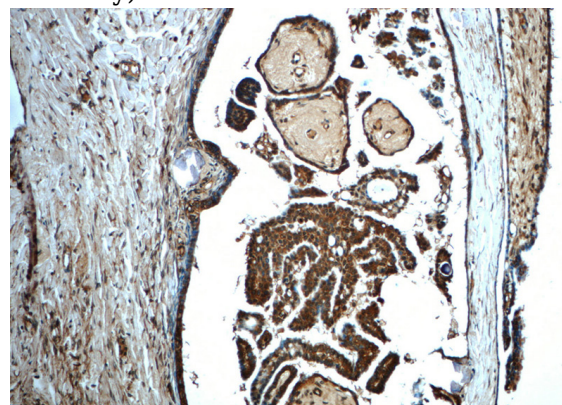
## Dilutions

Recommended Dilution:

## Validations



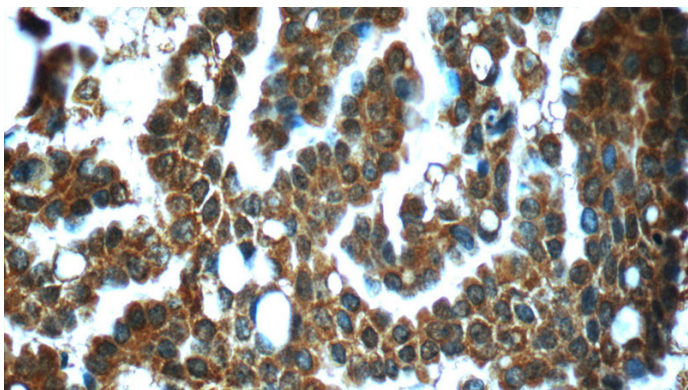
HeLa cells were subjected to SDS PAGE followed by western blot with Catalog No:111784(IMPDH1 antibody) at dilution of 1:2000



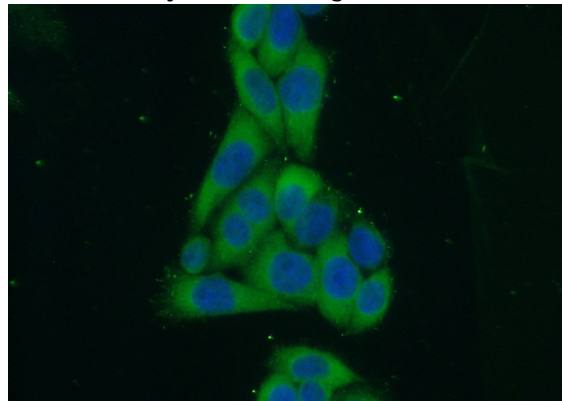
Immunohistochemistry of paraffin-embedded human ovary tumor slide using Catalog No:111784(IMPDH1 Antibody) at dilution of 1:50

# IMPDH1 antibody

Catalog Number: 111784



IP Result of anti-IMPDPH1 (IP:Catalog No:111784, 4ug; Detection:Catalog No:111784 1:2000) with HeLa cells lysate 3200ug.



Immunofluorescent analysis of (10% Formaldehyde) fixed HeLa cells using Catalog No:111784(IMPDPH1 Antibody) at dilution of 1:50 and Alexa Fluor 488-conjugated AffiniPure Goat Anti-Rabbit IgG(H+L)

