

IL22RA1 antibody



Catalog Number: 111779

Product name

IL22RA1 antibody

IF: 1:10-1:100

Specificity

Human, Mouse, Rat; other species not tested.

Antibody description

IL22RA1 Rabbit Polyclonal antibody. Positive WB detected in mouse spleen tissue, COLO 320 cells, HEK-293 cells, HepG2 cells. Positive FC detected in HepG2 cells. Positive IF detected in COLO 320 cells. Observed molecular weight by Western-blot: 62 kDa

Preparation

This antibody was obtained by immunization of IL22RA1 recombinant protein (Accession Number: NM_021258). Purification method: Antigen affinity purified.

Formulation

PBS with 0.02% sodium azide and 50% glycerol pH 7.3.

Storage

Store at -20°C. DO NOT ALIQUOT

Clonality

Polyclonal

Ig Type

Rabbit IgG

Applications

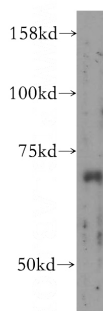
ELISA, WB, IF, FC

Dilutions

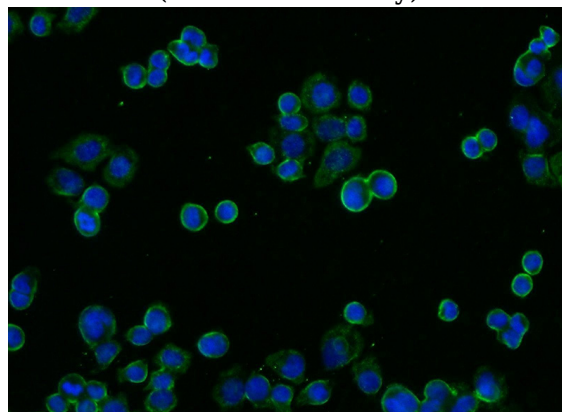
Recommended Dilution:

WB: 1:500-1:5000

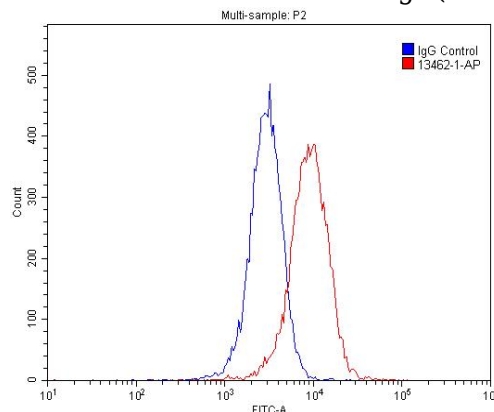
Validations



mouse spleen tissue were subjected to SDS PAGE followed by western blot with Catalog No:111779(IL22RA1 antibody) at dilution of 1:400



Immunofluorescent analysis of COLO 320 cells using Catalog No:111779(IL22RA1 Antibody) at dilution of 1:25 and Alexa Fluor 488-conjugated AffiniPure Goat Anti-Rabbit IgG(H+L)



1X10⁶ HepG2 cells were stained with .2ug IL22RA1 antibody (Catalog No:111779, red) and

IL22RA1 antibody



Catalog Number: 111779

control antibody (blue). Fixed with 4% PFA
blocked with 3% BSA (30 min). Alexa Fluor 488-

conjugated AffiniPure Goat Anti-Rabbit IgG(H+L)
with dilution 1:1500.