

# IL1RAPL1 antibody



Catalog Number: 111773

## Product name

IL1RAPL1 antibody

## Specificity

Human, Mouse, Rat; other species not tested.

## Antibody description

IL1RAPL1 Rabbit Polyclonal antibody. Positive IHC detected in human heart tissue. Positive IF detected in HepG2 cells, Hela cells. Positive FC detected in HeLa cells. Positive WB detected in human brain tissue, human heart tissue, human skeletal muscle tissue. Positive IP detected in mouse heart tissue. Observed molecular weight by Western-blot: 66-75 kDa

## Preparation

This antibody was obtained by immunization of IL1RAPL1 recombinant protein (Accession Number: XM\_017029240). Purification method: Antigen affinity purified.

## Formulation

PBS with 0.02% sodium azide and 50% glycerol pH 7.3.

## Storage

Store at -20°C. DO NOT ALIQUOT

## Clonality

Polyclonal

## Ig Type

Rabbit IgG

## Applications

ELISA, WB, IHC, IF, IP, FC

## Dilutions

Recommended Dilution:

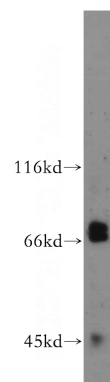
WB: 1:200-1:2000

IP: 1:200-1:1000

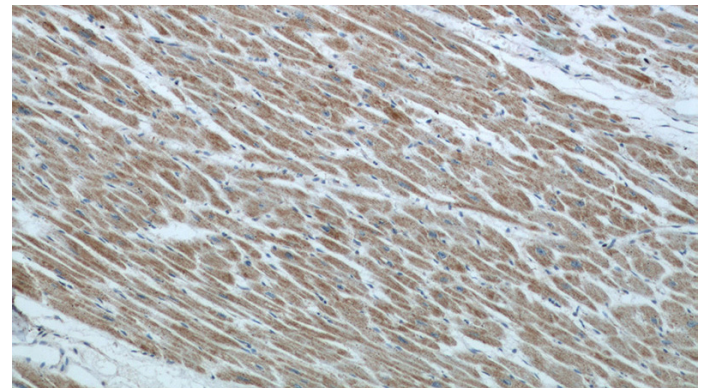
IHC: 1:20-1:200

IF: 1:10-1:100

## Validations



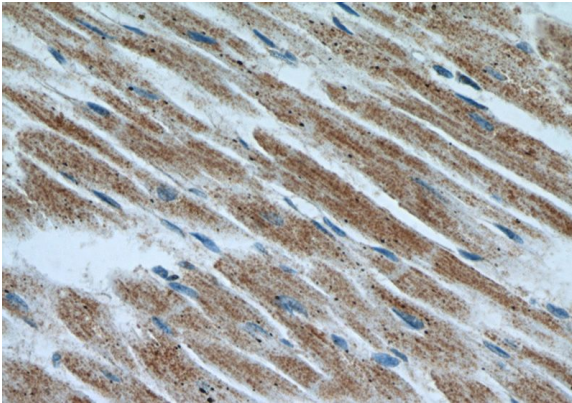
human brain tissue were subjected to SDS PAGE followed by western blot with Catalog No:111773(IL1RAPL1 antibody) at dilution of 1:500



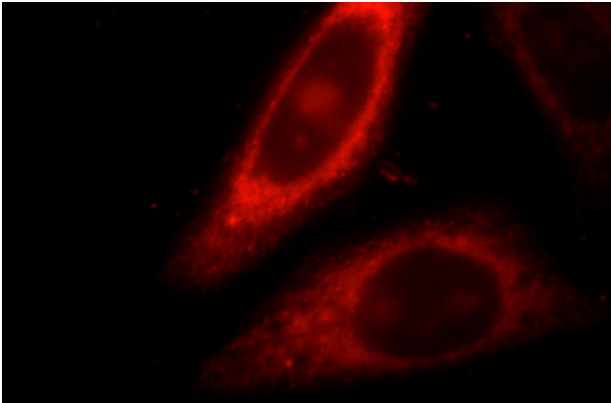
Immunohistochemical of paraffin-embedded human heart using Catalog No:111773(IL1RAPL1 antibody) at dilution of 1:50 (under 10x lens)

# IL1RAPL1 antibody

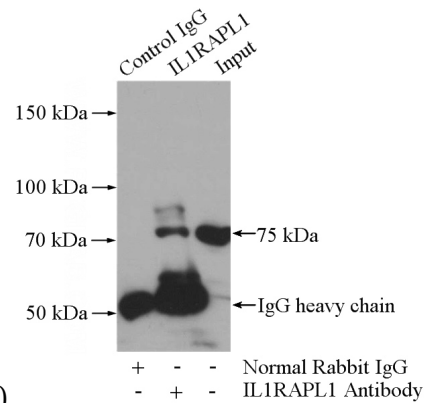
Catalog Number: 111773



Immunohistochemical of paraffin-embedded human heart using Catalog No:111773(IL1RAPL1 antibody) at dilution of 1:50 (under 40x lens)

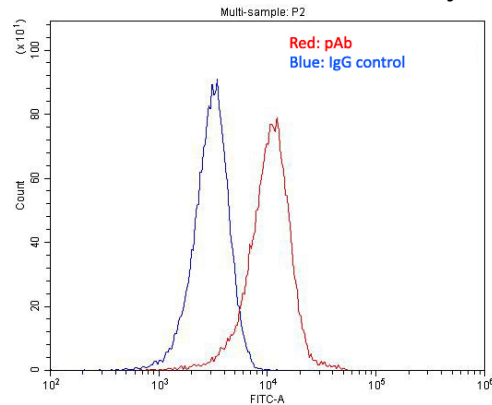


Immunofluorescent analysis of HepG2 cells, using IL1RAPL1 antibody Catalog No:111773 at 1:25 dilution and Rhodamine-labeled goat anti-rabbit



IgG (red).

IP Result of anti-IL1RAPL1 (IP:Catalog No:111773, 4ug; Detection:Catalog No:111773 1:300) with mouse heart tissue lysate 4000ug.



1X10<sup>6</sup> HeLa cells were stained with 0.2ug IL1RAPL1 antibody (Catalog No:111773, red) and control antibody (blue). Fixed with 4% PFA blocked with 3% BSA (30 min). Alexa Fluor 488-conjugated AffiniPure Goat Anti-Rabbit IgG(H+L) with dilution 1:1500.