

# IMMP2L antibody



Catalog Number: 111757

## Product name

IMMP2L antibody

Recommended Dilution:

WB: 1:1000-1:10000

## Immunogen

IHC: 1:20-1:200

[Human IMMP2L Recombinant protein \(His tag\)](#)

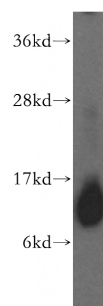
## Validations

## Specificity

Human, Mouse, Rat; other species not tested.

## Antibody description

IMMP2L Rabbit Polyclonal antibody. Positive IHC detected in human lung cancer tissue. Positive WB detected in human kidney tissue, human heart tissue, mouse skeletal muscle tissue. Observed molecular weight by Western-blot: 12 kDa



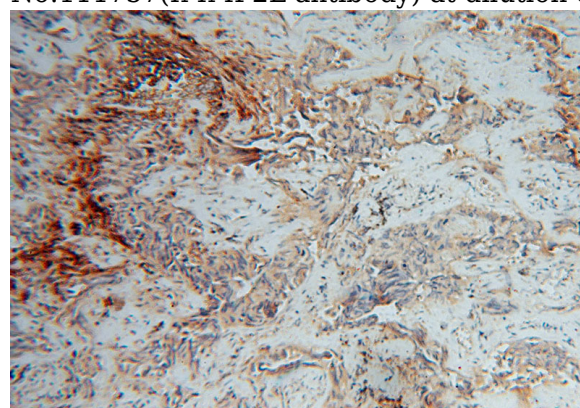
## Preparation

This antibody was obtained by immunization of IMMP2L recombinant protein (Accession Number: NM\_001350962). Purification method: Antigen affinity purified.

human kidney tissue were subjected to SDS PAGE followed by western blot with Catalog No:111757(IMMP2L antibody) at dilution of 1:500

## Formulation

PBS with 0.02% sodium azide and 50% glycerol pH 7.3.



## Storage

Store at -20°C. DO NOT ALIQUOT

Immunohistochemical of paraffin-embedded human lung cancer using Catalog No:111757(IMMP2L antibody) at dilution of 1:100 (under 10x lens)

## Clonality

Polyclonal

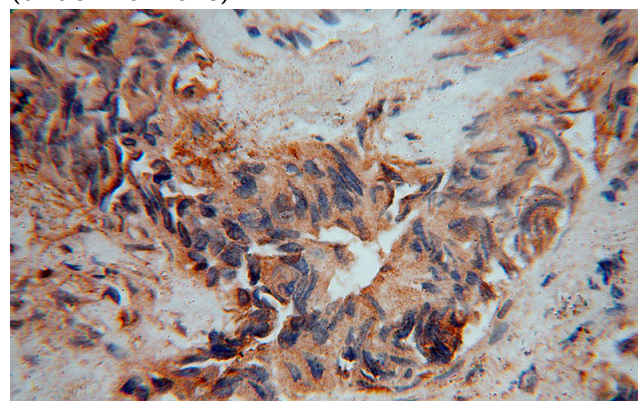
## Ig Type

Rabbit IgG

## Applications

ELISA, WB, IHC

## Dilutions



# IMMP2L antibody



Catalog Number: 111757

---

Immunohistochemical of paraffin-embedded  
human lung cancer using Catalog

No:111757(IMMP2L antibody) at dilution of 1:100  
(under 40x lens)