

# ILK antibody

Catalog Number: 111752

## Product name

ILK antibody

Recommended Dilution:

WB: 1:500-1:5000

## Specificity

Human, Mouse, Rat, Zebrafish; other species not tested.

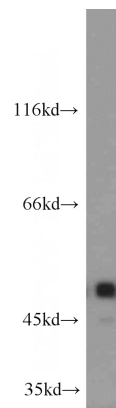
IP: 1:200-1:2000

IHC: 1:20-1:200

## Antibody description

ILK Rabbit Polyclonal antibody. Positive IP detected in mouse kidney tissue. Positive WB detected in mouse heart tissue, human heart tissue, mouse brain tissue, mouse kidney tissue, mouse spleen tissue. Positive IHC detected in human pancreas cancer tissue. Observed molecular weight by Western-blot: 51-59 kDa

## Validations



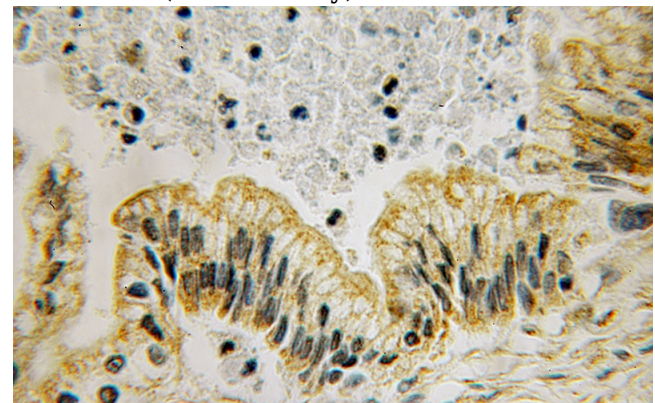
## Preparation

This antibody was obtained by immunization of ILK recombinant protein (Accession Number: NM\_001014794). Purification method: Antigen affinity purified.

mouse heart tissue were subjected to SDS PAGE followed by western blot with Catalog No:111752(ILK antibody) at dilution of 1:1000

## Formulation

PBS with 0.1% sodium azide and 50% glycerol pH 7.3.



## Storage

Store at -20°C. DO NOT ALIQUOT

## Clonality

Polyclonal

## Ig Type

Rabbit IgG

## Applications

ELISA, IHC, WB, IP

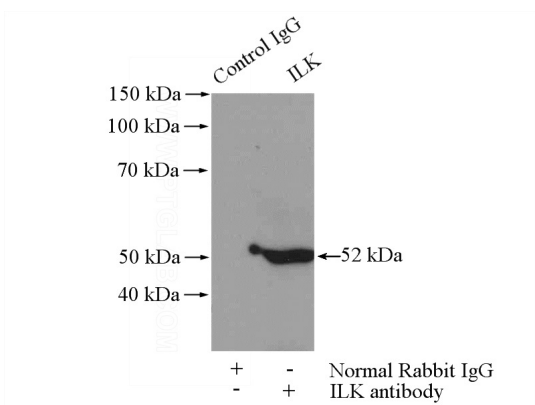
Immunohistochemical of paraffin-embedded human pancreas cancer using Catalog No:111752(ILK antibody) at dilution of 1:100 (under 10x lens)

## Dilutions

# ILK antibody

Catalog Number: 111752

---



IP Result of anti-ILK (IP:Catalog No:111752, 4ug; Detection:Catalog No:111752 1:800) with mouse kidney tissue lysate 4000ug.