

ILF3 antibody

Catalog Number: 111751

Product name

ILF3 antibody

Specificity

Human, Mouse, Rat; other species not tested.

Antibody description

ILF3 Rabbit Polyclonal antibody. Positive IP detected in HeLa cells. Positive WB detected in mouse spleen tissue, HeLa cells, HepG2 cells, Jurkat cells, K-562 cells, Raji cells. Positive IF detected in HeLa cells. Positive IHC detected in human cervical cancer tissue, human placenta tissue. Observed molecular weight by Western-blot: 90kd, 110kd

Preparation

This antibody was obtained by immunization of ILF3 recombinant protein (Accession Number: NM_001137673). Purification method: Antigen affinity purified.

Formulation

PBS with 0.02% sodium azide and 50% glycerol pH 7.3.

Storage

Store at -20°C. DO NOT ALIQUOT

Clonality

Polyclonal

Ig Type

Rabbit IgG

Applications

ELISA, IHC, IF, IP, WB

Dilutions

Recommended Dilution:

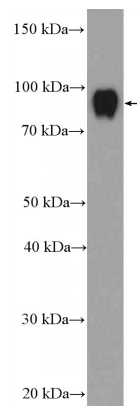
WB: 1:500-1:5000

IP: 1:500-1:5000

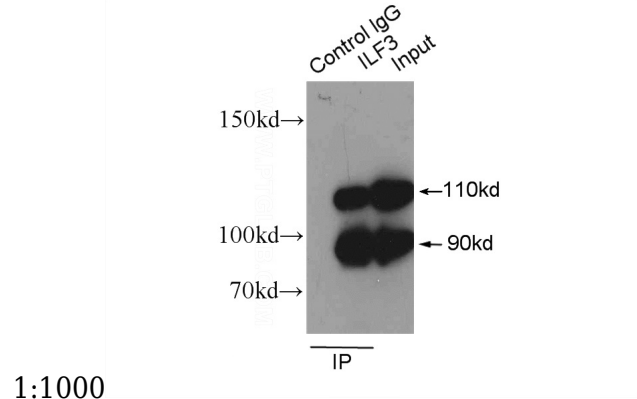
IHC: 1:20-1:200

IF: 1:10-1:100

Validations



mouse spleen tissue were subjected to SDS PAGE followed by western blot with Catalog No:111751(NF90,ILF3 Antibody) at dilution of

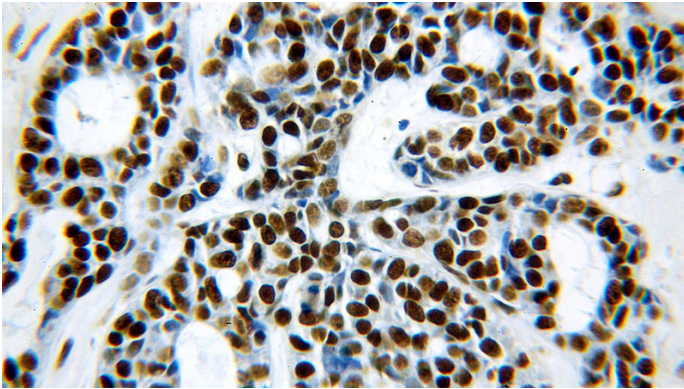


1:1000

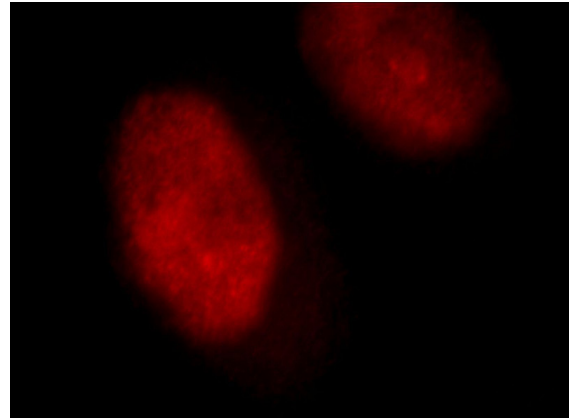
IP Result of anti-NF90,ILF3 (IP:Catalog No:111751, 3ug; Detection:Catalog No:111751 1:1000) with HeLa cells lysate 1600ug.

ILF3 antibody

Catalog Number: 111751



Immunohistochemical of paraffin-embedded human cervical cancer using Catalog No:111751(NF90,ILF3 antibody) at dilution of 1:100 (under 40x lens)



Immunofluorescent analysis of HeLa cells, using ILF3 antibody Catalog No:111751 at 1:25 dilution and Rhodamine-labeled goat anti-rabbit IgG (red).