

# HuR antibody

Catalog Number: 111725

## Product name

HuR antibody

## Specificity

Human, Mouse, Rat, Zebrafish; other species not tested.

## Antibody description

HuR Rabbit Polyclonal antibody. Positive FC detected in MCF-7 cells. Positive IHC detected in human ovary tumor tissue, human breast cancer tissue, human pancreas tissue, human skin tissue. Positive IF detected in MCF-7 cells, Ethacrynic acid treated HepG2 cells. Positive IP detected in HEK-293 cells. Positive WB detected in HEK-293 cells, A431 cells, HeLa cells, hESC cells, HL-60 cells, Jurkat cells, K-562 cells, NIH/3T3 cells, RAW264.7 cells. Observed molecular weight by Western-blot: 30-37kd

## Preparation

This antibody was obtained by immunization of HuR recombinant protein (Accession Number: NM\_001419). Purification method: Antigen affinity purified.

## Formulation

PBS with 0.1% sodium azide and 50% glycerol pH 7.3.

## Storage

Store at -20°C. DO NOT ALIQUOT

## Clonality

Polyclonal

## Ig Type

Rabbit IgG

## Applications

ELISA, WB, IF, IHC, FC, IP

## Dilutions

Recommended Dilution:

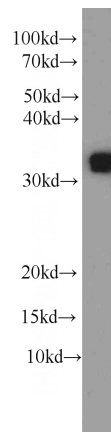
WB: 1:500-1:5000

IP: 1:500-1:5000

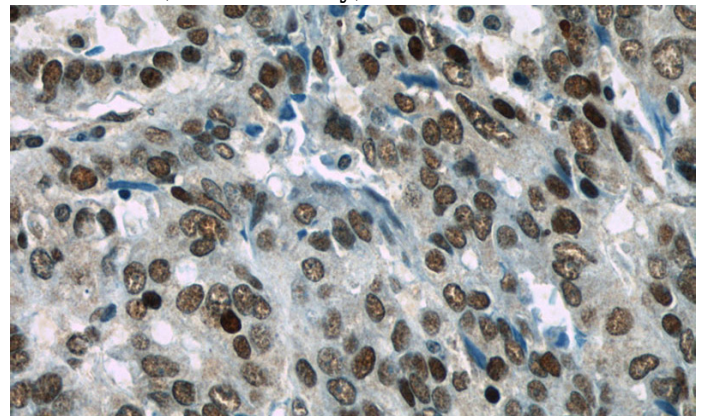
IHC: 1:20-1:200

IF: 1:20-1:200

## Validations



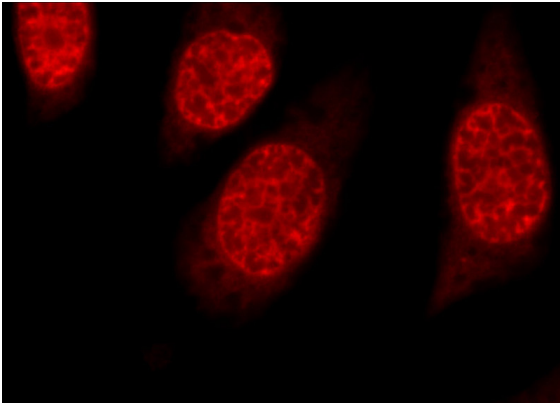
HEK-293 cells were subjected to SDS PAGE followed by western blot with Catalog No:111725(HuR antibody) at dilution of 1:1000



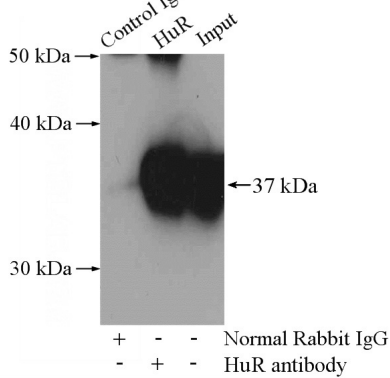
Immunohistochemistry of paraffin-embedded human ovary tumor slide using Catalog No:111725(HuR Antibody) at dilution of 1:50

# HuR antibody

Catalog Number: 111725

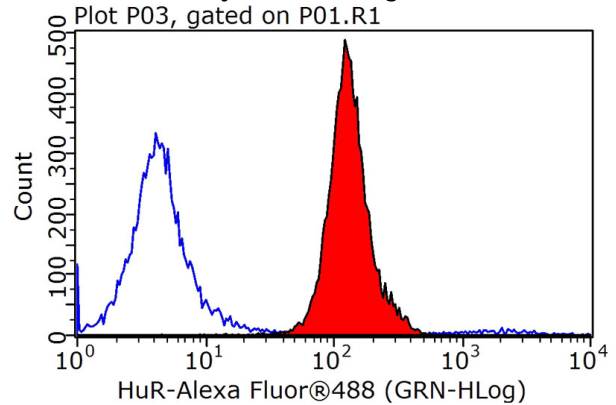


Immunofluorescent analysis of MCF-7 cells, using ELAVL1 antibody Catalog No:111725 at 1:50 dilution and Rhodamine-labeled goat anti-rabbit



IgG (red).

IP Result of anti-HuR (IP:Catalog No:111725, 4ug; Detection:Catalog No:111725 1:1000) with HEK-293 cells lysate 2800ug.



1X10<sup>6</sup> MCF-7 cells were stained with 0.2ug HuR antibody (Catalog No:111725, red) and control antibody (blue). Fixed with 90% MeOH blocked with 3% BSA (30 min). Alexa Fluor 488-conjugated AffiniPure Goat Anti-Rabbit IgG(H+L) with dilution 1:1000.